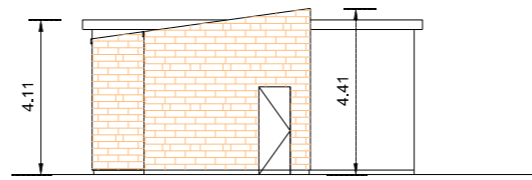
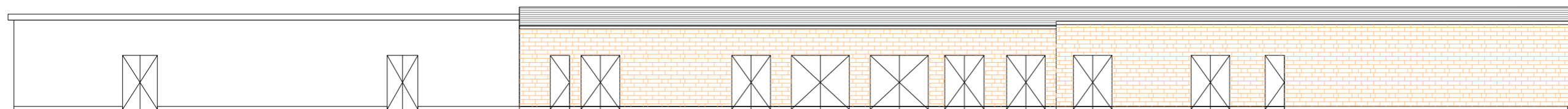


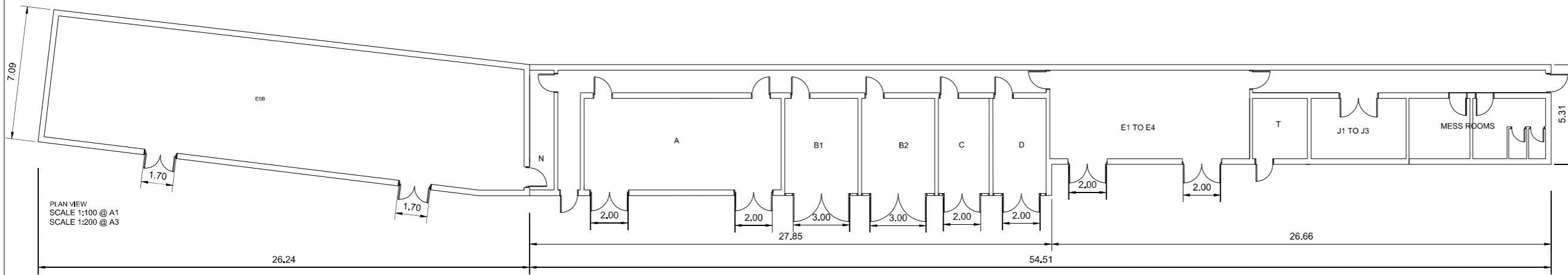
Notes:



VIEW B  
SCALE 1:100 @ A1  
SCALE 1:200 @ A3



FRONT VIEW A  
SCALE 1:100 @ A1  
SCALE 1:200 @ A3



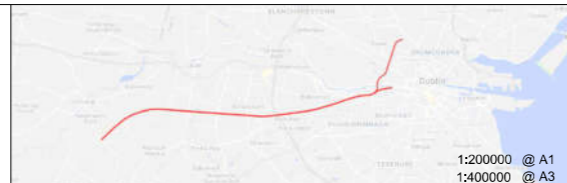
PLAN VIEW  
SCALE 1:100 @ A1  
SCALE 1:200 @ A3

VIEW-S

VIEW-A

POS.	DESIGNATION
A	HIGH VOLTAGE SWITCHBOARD
B1	TRACTION TRANSFORMER 1
B2	TRACTION TRANSFORMER 2
C	AUXILIARY TRANSFORMER
D	DIESEL GENERATOR
E1	TRACK FEEDER CIRCUIT BREAKERS (HSCB)
E2	RECTIFIER FEEDER BREAKER
E3	RECTIFIER
E4	RECTIFIER RETURN BREAKER
J1	UPS
J2	ESSENTIAL LV PANEL (110 V DC DISTRIBUTION)
J3	BATTERY CABINET
N	ESB METER CABINET
T	TELECOM

© Irish Rail (2022). This drawing is confidential and the copyright in it is owned by Irish Rail. This drawing must not be either loaned, copied or otherwise reproduced in whole or in part or used for any purpose without the prior permission of Irish Rail.  
© Ordnance Survey Ireland and government of Ireland. All O.S. Data used for plans are printed under: "Copyright Ordnance Survey Ireland" Survey No. 0039722, (OS Aerial Data or OS Lidar Data) & Survey No. 2022/OSI.NMA.150 (OS Vector Data).  
All elevations are in metres and relate to OSI Geoid Model (OSGM02) Mean Head as defined by existing Project Control.  
All Co-ordinates are in Irish Transverse Mercator Grid (ITM) as defined by OSI active GPS station Tallaght College (TLLG).



Rev	Date	Drn	Chk'd	App'd	Description
v01	10/11/2022	AA	NF	PT	PLANNING ISSUE

Client  
**Iarnród Éireann**  
**Irish Rail**

Engineering Designer  
**ATKINS**  
**TYPSA**  
Supported by:  
**rps**

Project Title	<b>DART + SOUTH WEST</b>		
Drawing Title	<b>ISLANDBRIDGE SUBSTATION BUILDING PLAN AND ELEVATIONS</b>		
Drawing File Name	DP-04-23-DWG-RO-TTA-18861	Version	v01
Status	S3		

DO NOT SCALE USE FIGURED DIMENSIONS ONLY

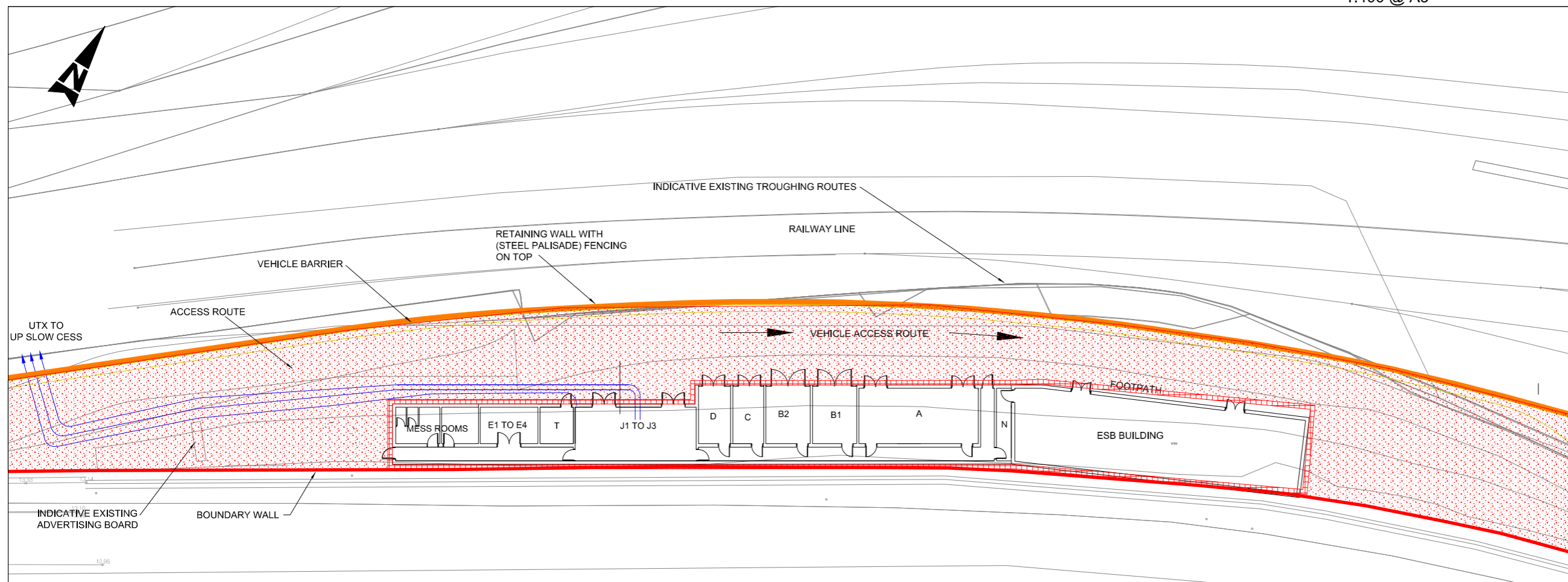
Drawing1.dwg

**SUBSTATION ACCESS PLAN**  
 1:1000 @ A1  
 1:2000 @ A3



**SUBSTATION LOCATION PLAN**  
 GRID REFERENCE  
 LATITUDE: 53.345063 LONGITUDE: -6.303291

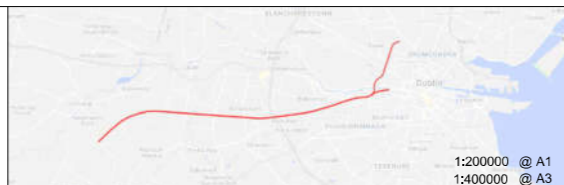
**SUBSTATION LAYOUT PLAN**  
 1:200 @ A1  
 1:400 @ A3



**KEY:**  
 BLUE - INDICATIVE DC CABLE ROUTE  
 ORANGE - RETAINING WALL  
 RED - NEW EQUIPMENT/LAND BOUNDARIES  
 UTX - UNDER TRACK CROSSING  
 ESB - ELECTRICITY SUPPLY BOARD

POS.	DESIGNATION
A	HIGH VOLTAGE SWITCHBOARD
B1	TRACTION TRANSFORMER 1
B2	TRACTION TRANSFORMER 2
C	AUXILIARY TRANSFORMER
D	DIESEL GENERATOR
E1	TRACK FEEDER CIRCUIT BREAKERS (HSCB)
E2	RECTIFIER FEEDER BREAKER
E3	RECTIFIER
E4	RECTIFIER RETURN BREAKER
J1	UPS
J2	ESSENTIAL LV PANEL (110 V DC DISTRIBUTION)
J3	BATTERY CABINET
N	ESB METER CABINET
T	TELECOM

© Irish Rail (2022). This drawing is confidential and the copyright in it is owned by Irish Rail. This drawing must not be either loaned, copied or otherwise reproduced in whole or in part or used for any purpose without the prior permission of Irish Rail.  
 © Ordnance Survey Ireland and government of Ireland. All O.S. Data used for plans are printed under: "Copyright Ordnance Survey Ireland" Survey No. 0039722. (OSI Aerial Data or OSI Lidar Data) & Survey No. 2022/OSI.NMA.150 (OSI Vector Data).  
 All elevations are in metres and relate to OSI Geoid Model (OSGM02) Mean Head as defined by existing Project Control.  
 All Co-ordinates are in Irish Transverse Mercator Grid (ITM) as defined by OSI active GPS station Tallaght College (TLLG).



Rev	Date	Drn	Chk'd	App'd	Description
v01	10/11/2022	AA	NF	PT	PLANNING ISSUE

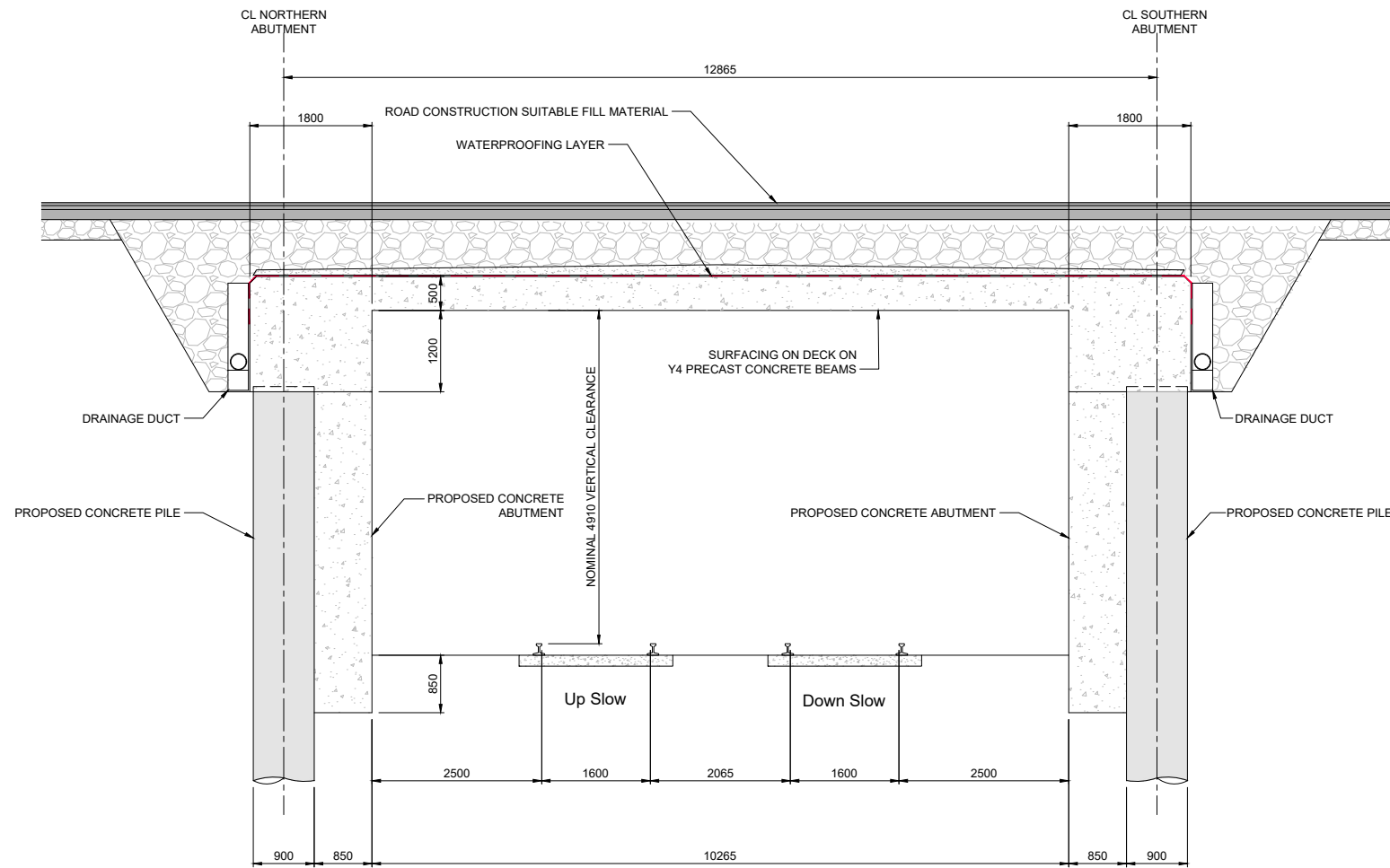
Client <b>Iarnród Éireann</b> Irish Rail		Engineering Designer <b>ATKINS</b> TYPSA Supported by: <b>rps</b>	
Date 10/11/2022	Scale AS SHOWN @ A1 @ A3	Drawn AA	Checked NF
Project Code 5195886	Issuer TTA	Approved PT	QMS Code

Project Title <b>DART + SOUTH WEST</b>	Drawing Title <b>ISLANDBRIDGE SUBSTATION LOCATION PLAN AND LAYOUT</b>
Drawing File Name DP-04-23-DWG-RO-TTA-18860	Version v01
Status S3	

DO NOT SCALE USE FIGURED DIMENSIONS ONLY

**DRAWING NOTES:**

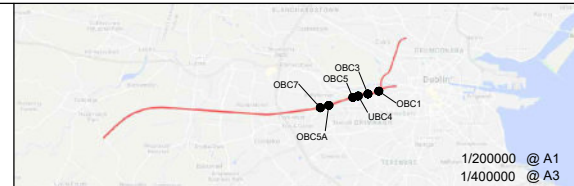
1. All dimensions are in millimetres unless noted otherwise
2. All levels are in metres relative to National Ordnance Datum unless noted otherwise
3. Chainages are expressed in metres
4. All angles are in degrees (0°-360°) unless noted otherwise
5. Dimensions are not to be scaled from the drawings



**B**  
18937 CROSS SECTION

V:\15199586\Cork\6 Dwg\Graphics\61 AutoCad\Tranches\DP-04-23-DWG-RO-TTA-18939.dwg

© Irish Rail (2022). This drawing is confidential and the copyright in it is owned by Irish Rail. This drawing must not be either loaned, copied or otherwise reproduced in whole or in part or used for any purpose without the prior permission of Irish Rail.  
 © Ordnance Survey Ireland and government of Ireland. All O.S. Data used for plans are printed under: "Copyright Ordnance Survey Ireland" Survey No. 0039722. (OSi Aerial Data or OSi Lidar Data) & Survey No. 2022/OSi\_NMA\_180 (OSi Vector Data).  
 All elevations are in metres and relate to OSi Geoid Model (OSGM02) Mean Head as defined by existing Project Control. All Co-ordinates are in Irish Transverse Mercator Grid (ITM) as defined by OSi active GPS station Tallaght College (TLLG).



Rev	Date	Drn	Chk'd	App'd	Description
v01	10.11.22	AOS	GOH	RM	PLANNING ISSUE

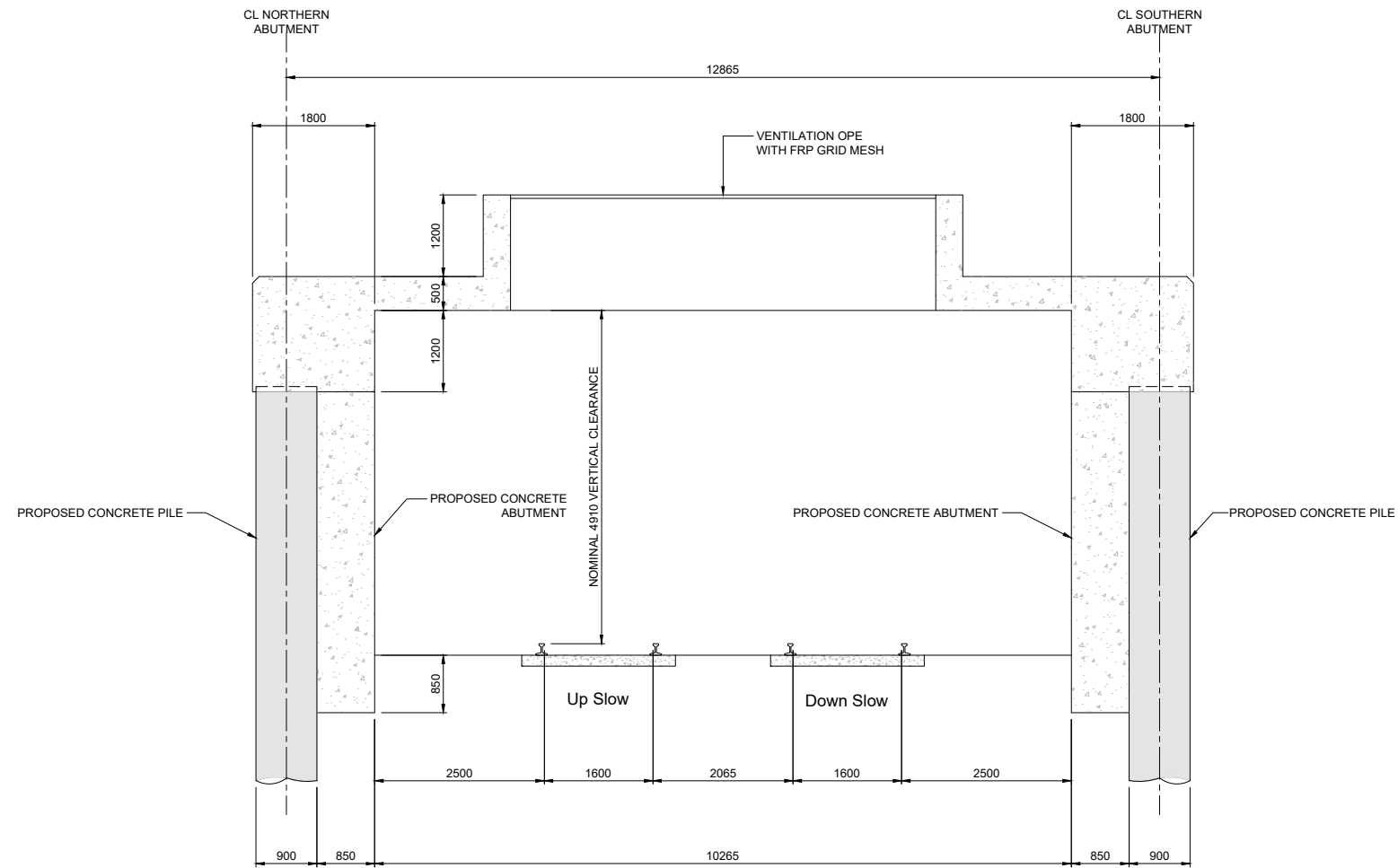
Client <b>Iarnród Éireann Irish Rail</b>		Engineering Designer <b>ATKINS</b> TYPESA Member of the SNC Lavalin Group	
Date 15.10.21	Scale 1:50 @ A1 1:100 @ A3	Drawn AOS	Checked GOH
Project Code 5199586	Issuer TTA	Approved RM	QMS Code

Project Title <b>DART + SOUTH WEST</b>	
Drawing Title <b>SOUTH CIRCULAR ROAD BRIDGE (OBC1) BRIDGE DECK CROSS SECTION TYPE 1</b>	
Drawing File Name DP-04-23-DWG-RO-TTA-18939	Version v01
Status S3	

DO NOT SCALE USE FIGURED DIMENSIONS ONLY

**DRAWING NOTES:**

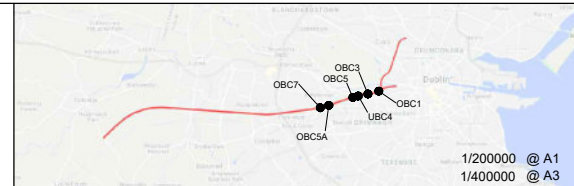
1. All dimensions are in millimetres unless noted otherwise
2. All levels are in metres relative to National Ordnance Datum unless noted otherwise
3. Chainages are expressed in metres
4. All angles are in degrees (0°-360°) unless noted otherwise
5. Dimensions are not to be scaled from the drawings



**C**  
18937 CROSS SECTION

V:\15199586\Cork\6 Dwg\Graphics\61 AutoCad\Tranches\DP-04-23-DWG-RO-TTA-18940.dwg

© Irish Rail (2022). This drawing is confidential and the copyright in it is owned by Irish Rail. This drawing must not be either loaned, copied or otherwise reproduced in whole or in part or used for any purpose without the prior permission of Irish Rail.  
 © Ordnance Survey Ireland and government of Ireland. All O.S. Data used for plans are printed under: "Copyright Ordnance Survey Ireland" Survey No. 0039722. (OSi Aerial Data or OSi Lidar Data) & Survey No. 2022/OSi\_NMA\_180 (OSi Vector Data).  
 All elevations are in metres and relate to OSi Geoid Model (OSGM02) Mean Head as defined by existing Project Control. All Co-ordinates are in Irish Transverse Mercator Grid (ITM) as defined by OSi active GPS station Tallaght College (TLLG).



Rev	Date	Drn	Chk'd	App'd	Description
v01	10.11.22	AOS	GOH	RM	PLANNING ISSUE

Client: **Iarnród Éireann Irish Rail**

Date: 15.10.21  
 Scale: 1:50 @ A1, 1:100 @ A3

Project Code: 5199586  
 Issuer: TTA

Engineering Designer: **ATKINS** (Member of the SNC Lavalin Group)

Supported by: **rps**

Drawn: AOS, Checked: GOH, Approved: RM

QMS Code:

Project Title: **DART + SOUTH WEST**

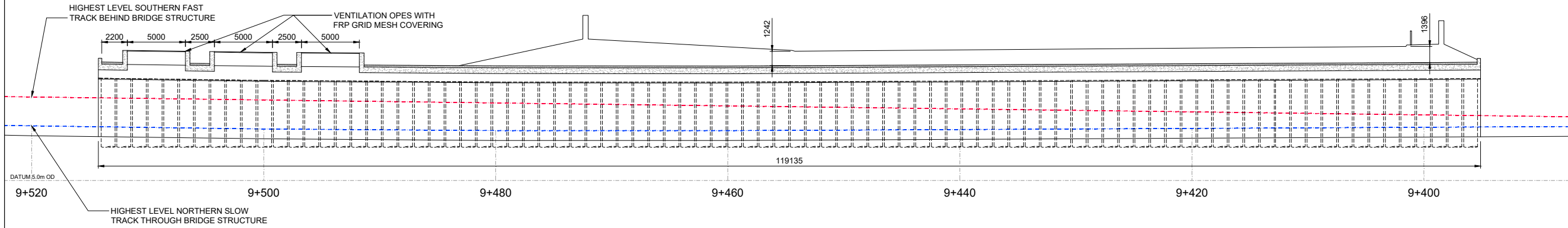
Drawing Title: **SOUTH CIRCULAR ROAD BRIDGE (OBC1) BRIDGE DECK CROSS SECTION TYPE 2**

Drawing File Name: DP-04-23-DWG-RO-TTA-18940  
 Version: v01  
 Status: S3

DO NOT SCALE USE FIGURED DIMENSIONS ONLY

**DRAWING NOTES:**

1. All dimensions are in millimetres unless noted otherwise
2. All levels are in metres relative to National Ordnance Datum unless noted otherwise
3. Chainages are expressed in metres
4. All angles are in degrees (0°-360°) unless noted otherwise
5. Dimensions are not to be scaled from the drawings



**A**  
18937 **LONGITUDINAL SECTION**

© Irish Rail (2022). This drawing is confidential and the copyright in it is owned by Irish Rail. This drawing must not be either loaned, copied or otherwise reproduced in whole or in part or used for any purpose without the prior permission of Irish Rail.  
 © Ordnance Survey Ireland and government of Ireland. All O.S. Data used for plans are printed under: "Copyright Ordnance Survey Ireland" Survey No. 0039722. (OSi Aerial Data or OSi Lidar Data) & Survey No. 2022/OSi\_NMA\_180 (OSi Vector Data).  
 All elevations are in metres and relate to OSi Geoid Model (OSGM02) Mean Head as defined by existing Project Control. All Co-ordinates are in Irish Transverse Mercator Grid (ITM) as defined by OSi active GPS station Tallaght College (TLLG).

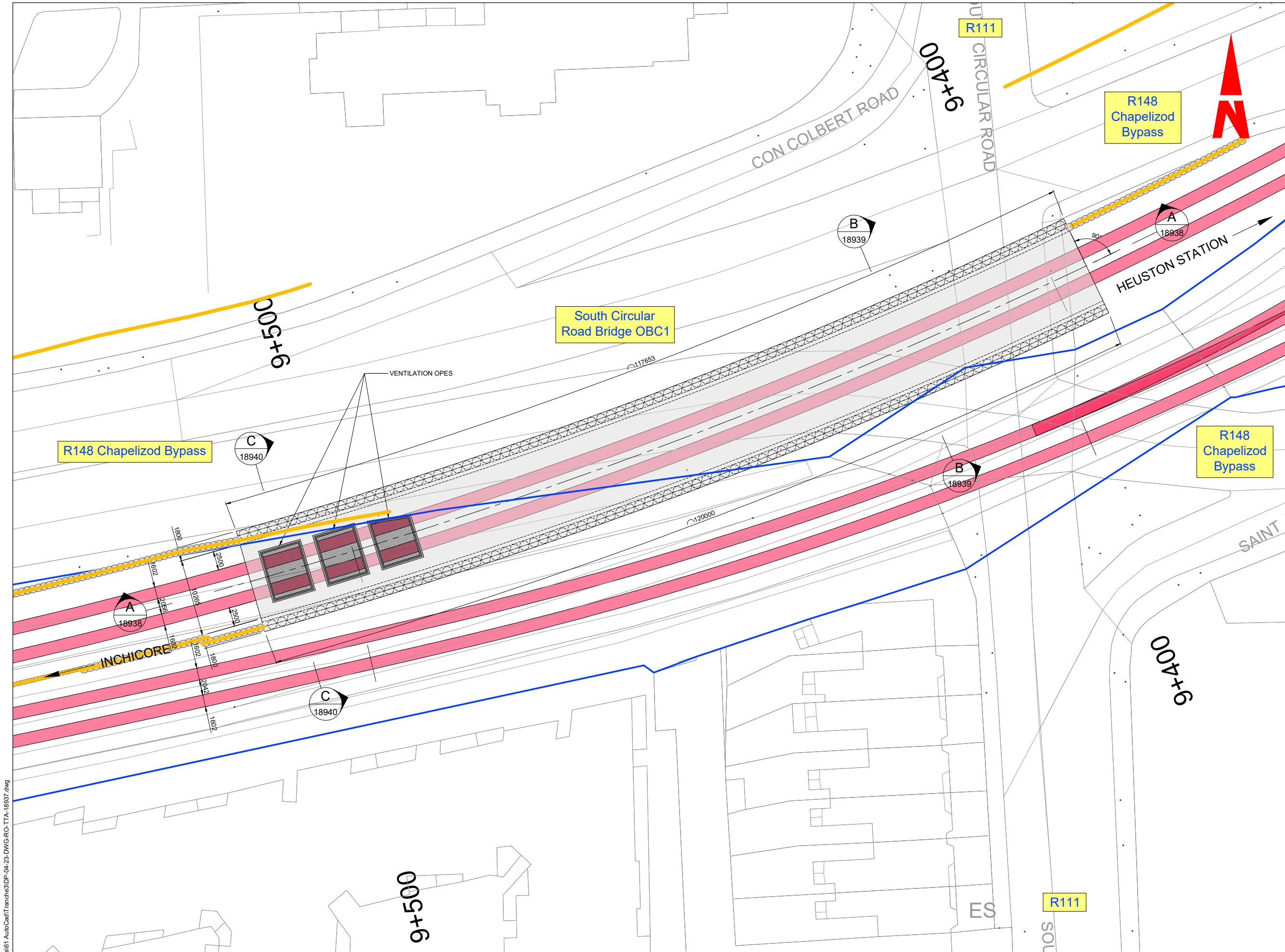


Rev	Date	Drn	Chk'd	App'd	Description
v01	10.11.22	AOS	GOH	RM	PLANNING ISSUE

Client <b>Iarnród Éireann Irish Rail</b>		Engineering Designer <b>ATKINS</b> Supported by <b>fps</b>	
Date 15.10.21	Scale 1:200 @ A1 1:400 @ A3	Drawn AOS	Checked GOH
Project Code 5199586	Issuer TTA	Approved RM	QMS Code

Project Title <b>DART + SOUTH WEST</b>	
Drawing Title <b>SOUTH CIRCULAR ROAD BRIDGE (OBC1) BRIDGE DECK LONGITUDINAL SECTION</b>	
Drawing File Name DP-04-23-DWG-RO-TTA-18938	Version v01
Status S3	

DO NOT SCALE USE FIGURED DIMENSIONS ONLY



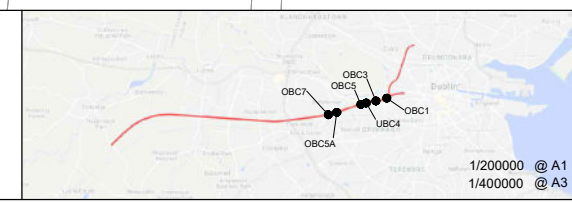
- DRAWING NOTES:**
- All dimensions are in millimetres unless noted otherwise
  - All levels are in metres relative to National Ordnance Datum unless noted otherwise
  - Chainages are expressed in metres
  - All angles are in degrees (0°-360°) unless noted otherwise
  - Dimensions are not to be scaled from the drawings

**LEGEND:**

— CIÉ Land Ownership

V:\15199586 Cork\6 Dwg\Graphics\61 AutoCad\Tramch3\DP-04-23-DWG-RO-TTA-18937.dwg

© Irish Rail (2022). This drawing is confidential and the copyright in it is owned by Irish Rail. This drawing must not be either loaned, copied or otherwise reproduced in whole or in part or used for any purpose without the prior permission of Irish Rail.  
 © Ordnance Survey Ireland and government of Ireland. All O.S. Data used for plans are printed under: "Copyright Ordnance Survey Ireland" Survey No. 0039722. (OSi Aerial Data or OSi Lidar Data) & Survey No. 2022/OSi\_NMA\_180 (OSi Vector Data).  
 All elevations are in metres and relate to OSi Geoid Model (OSGM02) Mean Head as defined by existing Project Control. All Co-ordinates are in Irish Transverse Mercator Grid (ITM) as defined by OSi active GPS station Tallaght College (TLLG).



Rev	Date	Drm	Chk'd	App'd	Description
v01	10.11.22	AOS	GOH	RM	PLANNING ISSUE

Client: **Iarnród Éireann Irish Rail**

Engineering Designer: **ATKINS** (Member of the SNC Lavalin Group)

Supported by: **TYPSPA** and **rps**

Date: 15.10.21 | Scale: 1:250 @ A1, 1:500 @ A3

Project Code: 5199586 | Issuer: TTA

Drawn: AOS | Checked: GOH | Approved: RM

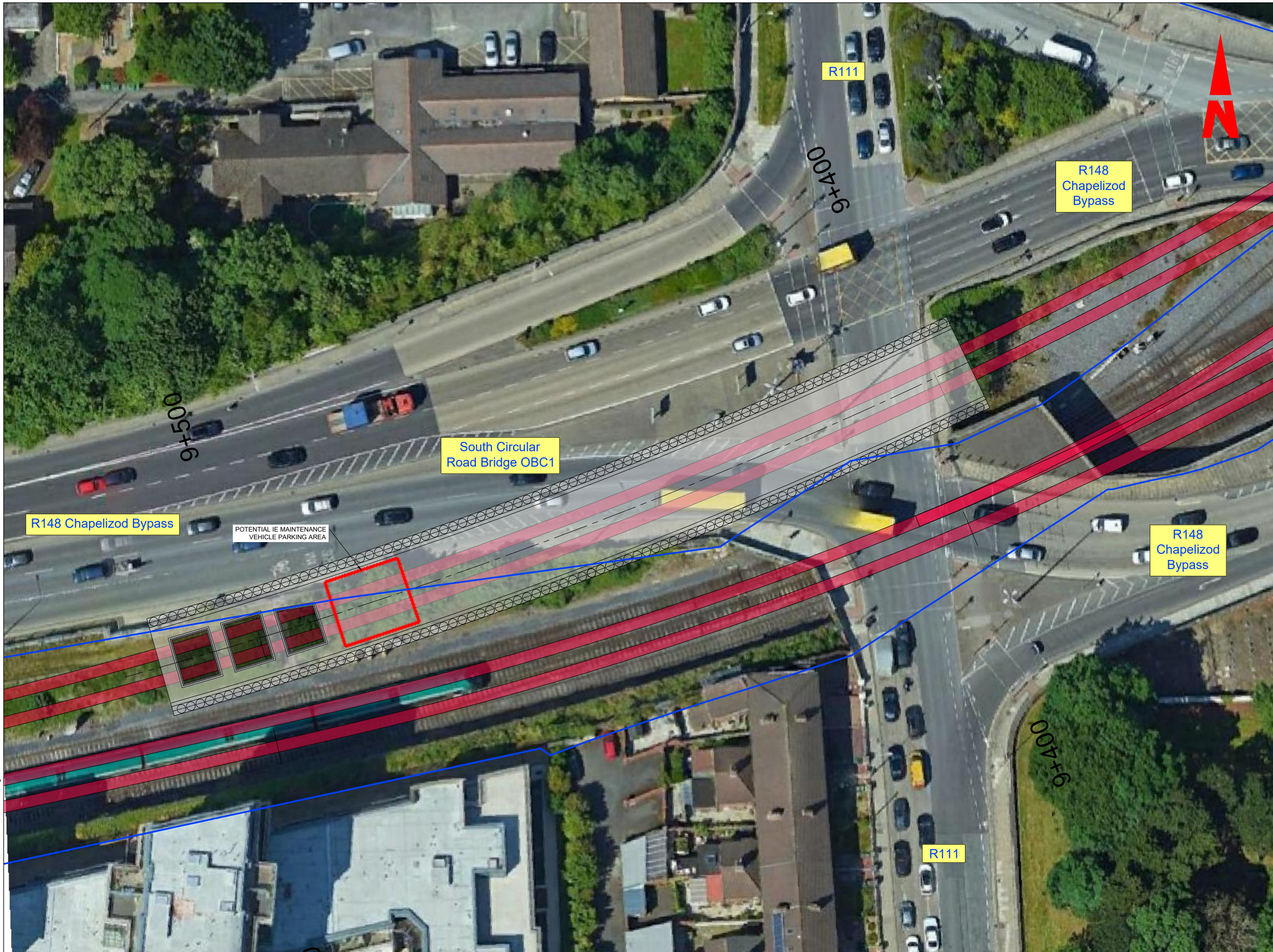
QMS Code: \_\_\_\_\_

Project Title: **DART + SOUTH WEST**

Drawing Title: **SOUTH CIRCULAR ROAD OVERBRIDGE (OBC1) BRIDGE DECK PLAN**

Drawing File Name: DP-04-23-DWG-RO-TTA-18937 | Version: v01 | Status: S3

DO NOT SCALE USE FIGURED DIMENSIONS ONLY



**DRAWING NOTES:**

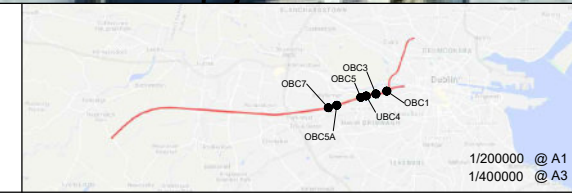
1. All dimensions are in millimetres unless noted otherwise
2. All levels are in metres relative to National Ordnance Datum unless noted otherwise
3. Chainages are expressed in metres
4. All angles are in degrees (0°-360°) unless noted otherwise
5. Dimensions are not to be scaled from the drawings
6. H4A vehicle restraints system layout to be agreed in liaison with Irish Rail.

**LEGEND:**

- CIÉ Land Ownership
- ▨ Gabion Wall
- ▨ King Post Wall
- ▨ King Post Wall

V:\51989586\_Cork\6 Dwggs-Graphics\61 AutoCad\Tranche3\DP-04-23-DWG-RO-TTA-18936.dwg

© Irish Rail (2022). This drawing is confidential and the copyright in it is owned by Irish Rail. This drawing must not be either loaned, copied or otherwise reproduced in whole or in part or used for any purpose without the prior permission of Irish Rail.  
 © Ordnance Survey Ireland and government of Ireland. All O.S. Data used for plans are printed under: "Copyright Ordnance Survey Ireland" Survey No. 0039722. (OSI Aerial Data or OSI Lidar Data) & Survey No. 2022/OSI\_NMA\_180 (OSI Vector Data). All elevations are in metres and relate to OSI Geoid Model (OSGM02) Mean Head as defined by existing Project Control. All Co-ordinates are in Irish Transverse Mercator Grid (ITM) as defined by OSI active GPS station Tallaght College (TLLG).



Rev	Date	Drn	Chk'd	App'd	Description
v01	10.11.22	AOS	GOH	RM	PLANNING ISSUE

Client: **Iarnród Éireann Irish Rail**

Engineering Designer: **ATKINS** (Member of the SNC Lavalin Group) supported by **rps**

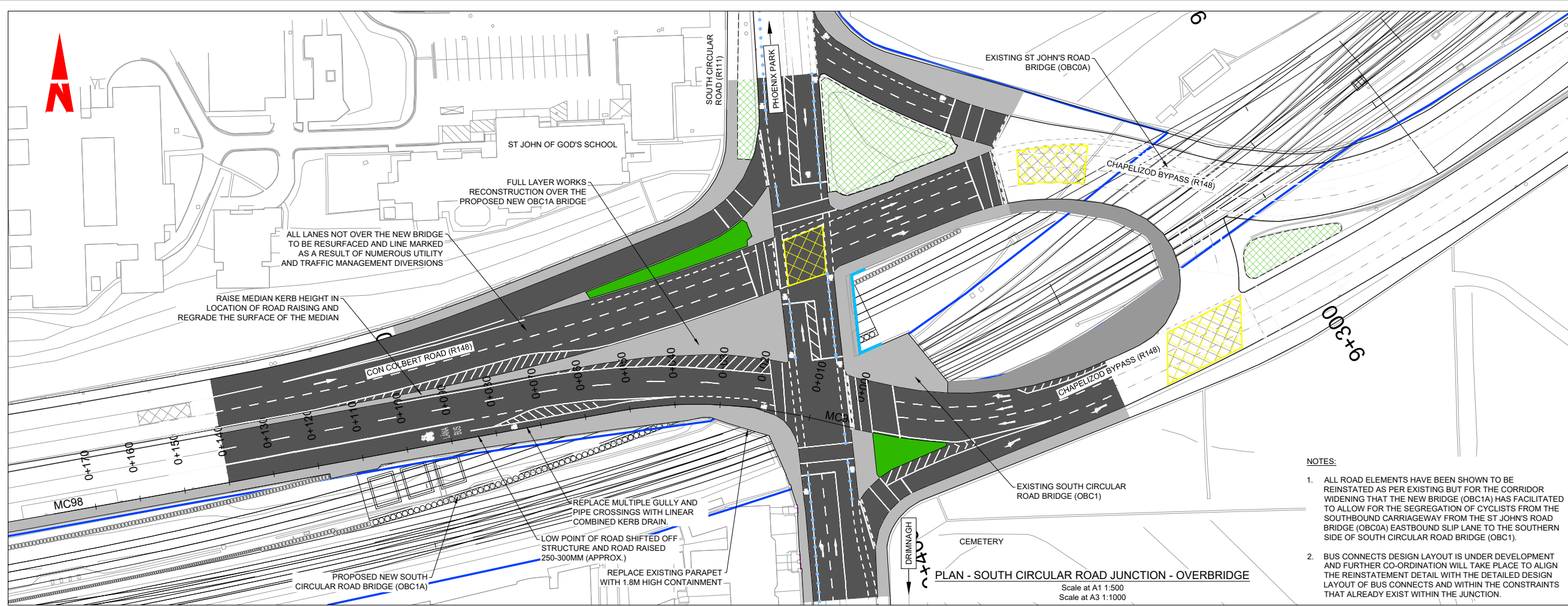
Date: 15.10.21 | Scale: 1:200 @ A1, 1:400 @ A3

Project Code: 5199586 | Issuer: TTA

QMS Code: [ ] | Drawn: AOS | Checked: GOH | Approved: RM

Project Title	<b>DART + SOUTH WEST</b>		
Drawing Title	<b>SOUTH CIRCULAR ROAD BRIDGE (OBC1) GENERAL ARRANGEMENT</b>		
Drawing File Name	DP-04-23-DWG-RO-TTA-18936	Version	v01
Status	S3		

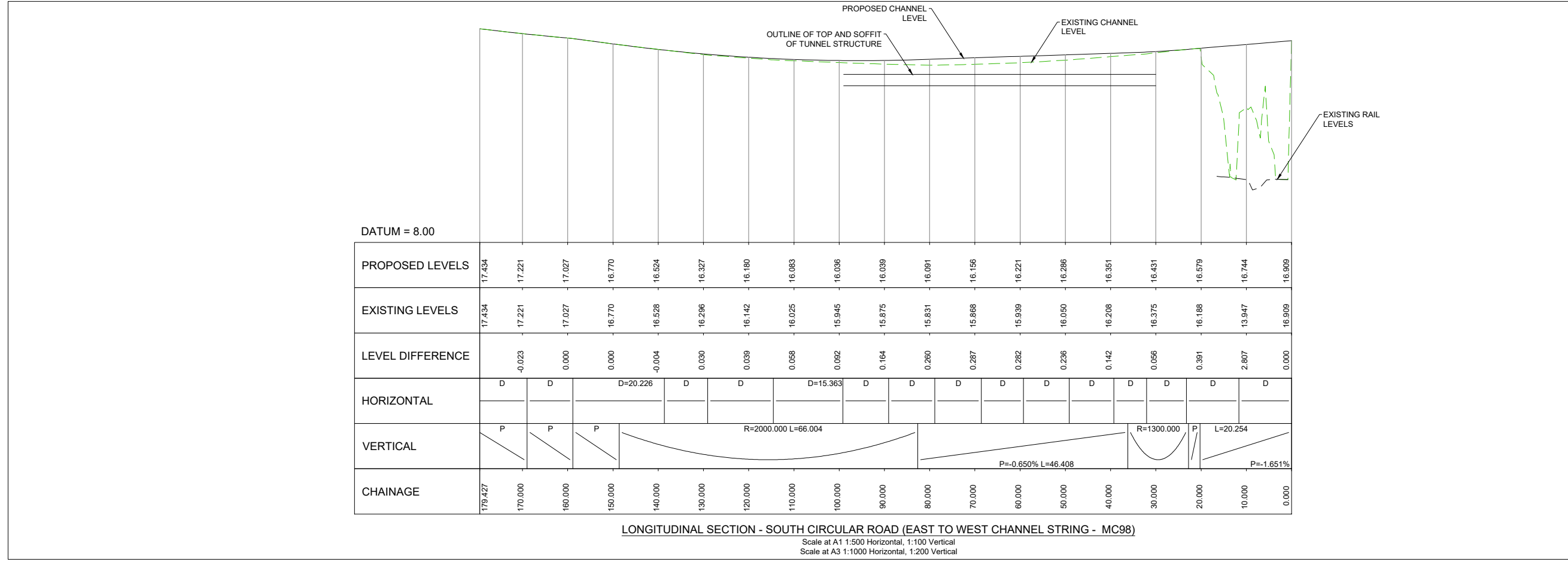
DO NOT SCALE USE FIGURED DIMENSIONS ONLY



- LEGEND:**
- EXISTING CIÉ PROPERTY OWNERSHIP BOUNDARY
  - H4A CONTAINMENT
  - CARRIAGEWAY
  - PROPOSED FOOTPATH
  - PROPOSED SHARED SPACE
  - PROPOSED RAISED CYCLE TRACK / LANE
  - PROPOSED ON ROAD CYCLE LANE
  - PROPOSED TACTILE PAVING (CONTROLLED)
  - PROPOSED TACTILE PAVING (UNCONTROLLED)
  - PROPOSED GRASS VERGE
  - EXISTING GRASS VERGE TO BE RETAINED

- NOTES:**
1. ALL DIMENSIONS ARE IN MILLIMETERS UNLESS NOTED OTHERWISE.
  2. ALL LEVELS ARE IN METRES RELATIVE TO NATIONAL ORDINANCE DATUM UNLESS NOTED OTHERWISE.
  3. CHAINAGES ARE EXPRESSED IN METERS.
  4. ALL ANGLES ARE IN DEGREES (0°360°) UNLESS NOTED OTHERWISE.
  5. DIMENSIONS ARE NOT TO BE SCALED FROM THE DRAWING.

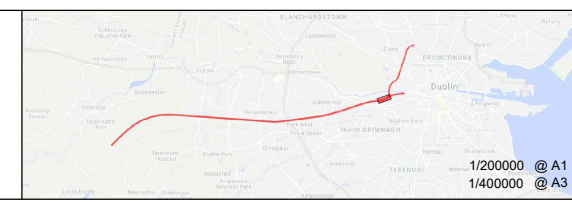
- NOTES:**
1. ALL ROAD ELEMENTS HAVE BEEN SHOWN TO BE REINSTATED AS PER EXISTING BUT FOR THE CORRIDOR WIDENING THAT THE NEW BRIDGE (OBC1A) HAS FACILITATED TO ALLOW FOR THE SEGREGATION OF CYCLISTS FROM THE SOUTHBOUND CARRIAGEWAY FROM THE ST JOHN'S ROAD BRIDGE (OBC0A) EASTBOUND SLIP LANE TO THE SOUTHERN SIDE OF SOUTH CIRCULAR ROAD BRIDGE (OBC1).
  2. BUS CONNECTS DESIGN LAYOUT IS UNDER DEVELOPMENT AND FURTHER CO-ORDINATION WILL TAKE PLACE TO ALIGN THE REINSTATEMENT DETAIL WITH THE DETAILED DESIGN LAYOUT OF BUS CONNECTS AND WITHIN THE CONSTRAINTS THAT ALREADY EXIST WITHIN THE JUNCTION.



**LONGITUDINAL SECTION - SOUTH CIRCULAR ROAD (EAST TO WEST CHANNEL STRING - MC98)**  
 Scale at A1 1:500 Horizontal, 1:100 Vertical  
 Scale at A3 1:1000 Horizontal, 1:200 Vertical

U:\15\199586\6 Dwg\Graphics\1 AutoCad\DP-04-23-DWG-RO-TTA-18972.dwg

© Irish Rail (2022). This drawing is confidential and the copyright in it is owned by Irish Rail. This drawing must not be either loaned, copied or otherwise reproduced in whole or in part or used for any purpose without the prior permission of Irish Rail.  
 © Ordnance Survey Ireland and government of Ireland. All O.S. Data used for plans are printed under: "Copyright Ordnance Survey Ireland" Survey No. 0039722. (OSi Aerial Data or OSi Lidar Data) & Survey No. 2022/OSi\_NMA\_180 (OSi Vector Data).  
 All elevations are in metres and relate to OSi Geoid Model (OSGM02) Mean Head as defined by existing Project Control. All Co-ordinates are in Irish Transverse Mercator Grid (ITM) as defined by OSi active GPS station Tallaght College (TLLG).



Rev	Date	Drn	Chk'd	App'd	Description
v01	10.11.22	DB	JX	JAP	PLANNING ISSUE

Client: **Iarnród Éireann Irish Rail**

Engineering Designer: **ATKINS** (Member of the SNC Lavalin Group)

Supported by: **rps**

Date: 28.04.22 | Scale AS SHOWN @ A1 AS SHOWN @ A3

Project Code: 5199586 | Issuer: TTA

Drawn: DB | Checked: JX | Approved: JAP

QMS Code: \_\_\_\_\_

Project Title: **DART + SOUTH WEST**

Drawing Title: **SOUTH CIRCULAR ROAD BRIDGE (OBC1A) ROAD PLAN AND PROFILE**

Drawing File Name: DP-04-23-DWG-RO-TTA-18972 | Version: v01 | Status: S3

DO NOT SCALE USE FIGURED DIMENSIONS ONLY