

2 x new impaired mobility parking slots

Sliding gate

DUNBOYNE

- Notes:
1. This drawing shows the following new SET buildings: 38kV traction substations (IE+ESB) and ASP.
  2. HV MPRN required
  3. 38kV traction substations (IE+ESB) measures:
    - IE part: 30x10 m (length x width) internal; 30.6 x 10.6 m (length x width) external; height 5.67m
    - ESB part: 14.88 x 8.4 m (length x width) internal; 15.48 x 9 m (length x width) external; height 5m
  4. The GPS coordinates are referred to the center of the ESB part of the HV 38 kV substation: EASTINGS: 702060,6241 (ITM), NORTHINGS: 741929,8407 (ITM)
  5. Dual locking system at the entrance to the HV substation (no other locking system, including a key safe)

LEGEND					
ESB - MV/LV Underground	Industrial Sewage Network	Asphalt	Substation	10kV MV	
ESB - HV Overhead	Water Supply Network	Sidewalk	Landscape planting	ESB	
ESB - MV Overhead	Storm water	Palisade fence 2.65 m	Palisade fence 2.40 m	SEB	
ESB - LV Overhead	EIR	Network diversion	IE Property Line	PSP	
Watermain	Gravity network			TER	
Virgin (NTL - UPC)	Gas Network (4 bar)			ASP	
				DNO	

V01	April 2022	PLANNING ISSUE	MCG	MPT	CCS
REV.	DATE	DESCRIPTION	PRODUCED BY	REVIEWED BY	APPROVED BY
<small>© Irish Rail (2020). This drawing is confidential and the copyright in it is owned by Irish Rail. This drawing must not be either loaned, copied or otherwise reproduced in whole or in part or used for any purpose without the prior permission of Irish Rail.          © Ordnance Survey Ireland and Government of Ireland. All O.S. data used for plans are printed under "Copyright Ordnance Survey Ireland".          Survey No. 0039720 (OSi Aerial Data or OSi Lidar Data) &amp; Survey No. 2020/OSi_NMA_180 (OSi Vector Data).          All elevations are in metres and relate to OSi Geoid Model (OSGM02) Mean Head as defined by existing Project Control.          All Co-ordinates are in Irish Transverse Mercator Grid (ITM) as defined by OSi active GPS station Tallaght College (TLG0).</small>					

Client

Consultant

Project

Drawing Title

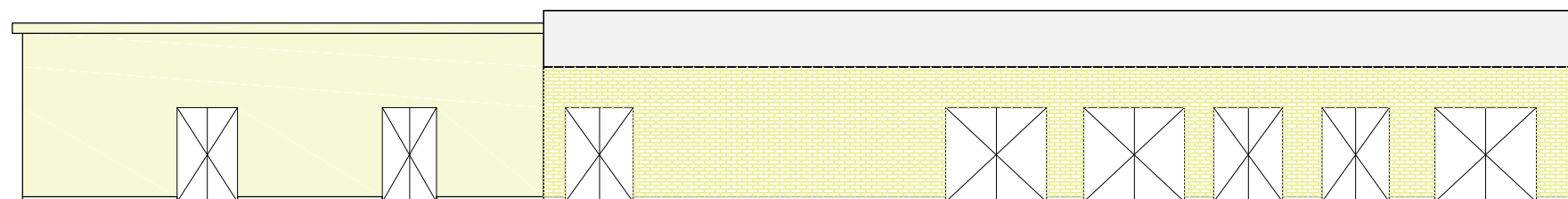
SET TECHNICAL BUILDINGS DUNBOYNE

Scale: 1:500 @ A1

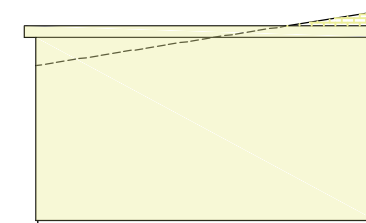
Drawing Number | Project | Originator | Discipline | Location | Type | Role | Number | Phase

MAY MDC SET RS16 DR Z 0003 D

Date: April 2022 | Job No: P/101086 | Status: F1-Approved & accepted | Rev: V01 | Sheet: 01 of 01

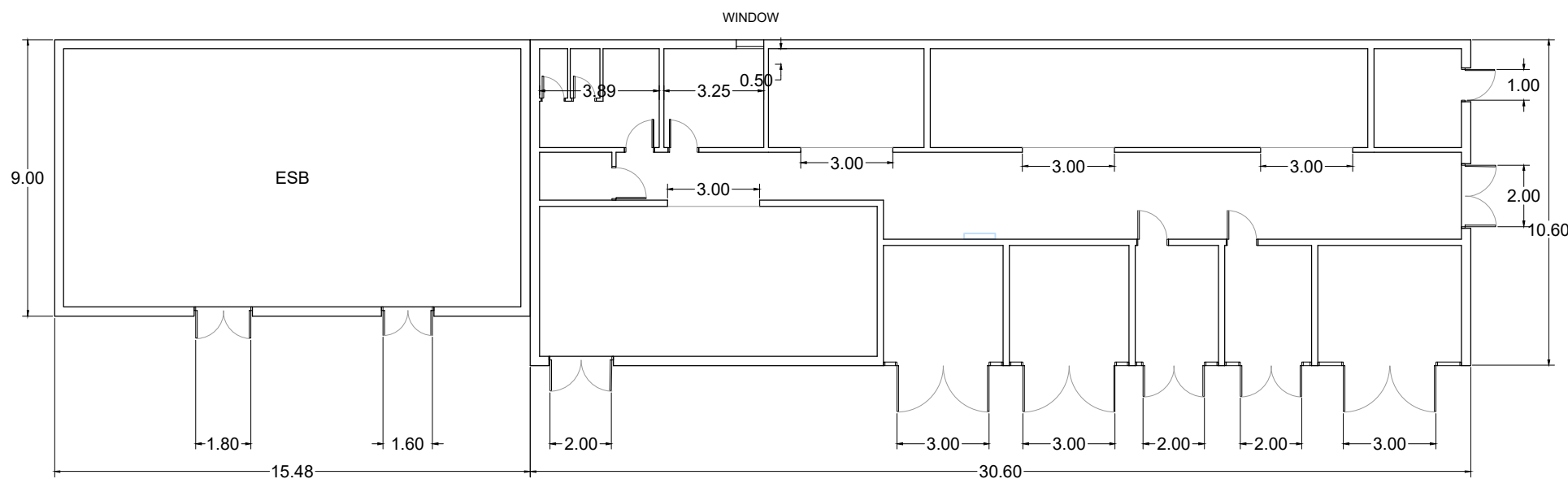


FRONT VIEW



VIEW 1-1'

1



PLAN VIEW

REV	DATE	DESCRIPTION	PRODUCED BY	REVIEWED BY	APPROVED BY
V01	April 2022	PLANNING ISSUE	MCG	MPT	CCS
<small>© Irish Rail (2022). This drawing is confidential and the copyright in it is owned by Irish Rail. This drawing must not be either loaned, copied or otherwise reproduced in whole or in part or used for any purpose without the prior permission of Irish Rail.          © Ordnance Survey Ireland and Government of Ireland. All O.S. data used for plans are printed under 'Copyright Ordnance Survey Ireland'.          Survey No. 6039720 (OS Aerial Data or OS Lidar Data) &amp; Survey No. 2020091_NMA_180 (OS Vector Data).          All elevations are in metres and relate to OS Geoid Mean1 (OSGM02) Mean-High as defined by existing Project Control.          All Coordinates are in Irish Transverse Mercator Grid (ITM) as defined by OSi active GPS station Tallaght College (TL40).</small>					

Client

Consultant

Project

Drawing Title

SET TECHNICAL BUILDINGS  
DUNBOYNE BUILDINGS DETAIL

Scale: 1/200@A3

Date:	Job No:	Status:	Rev:	Sheet:
April 2022	P/101086	F1-Approved & accepted	V01	01 of 01