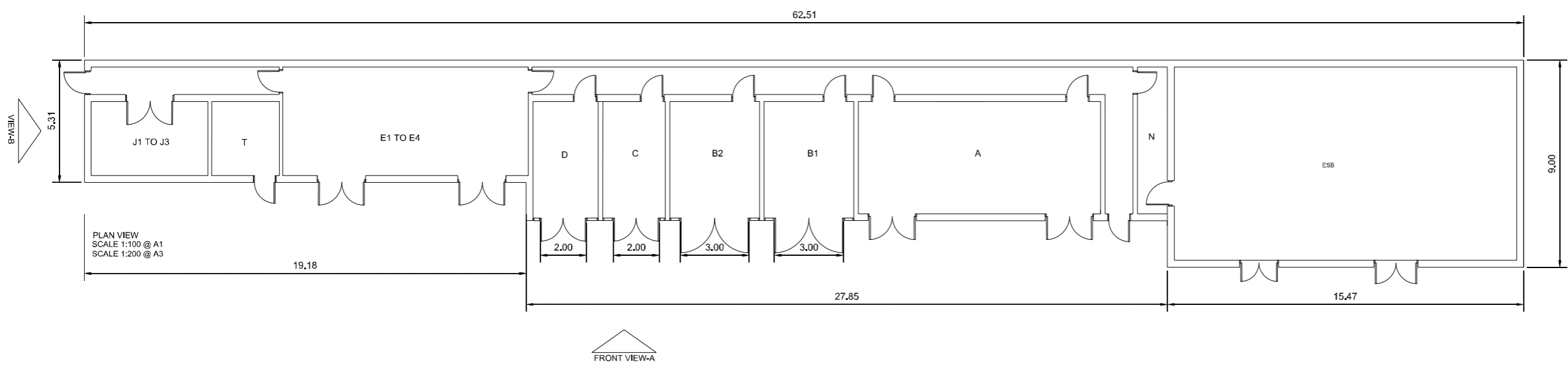
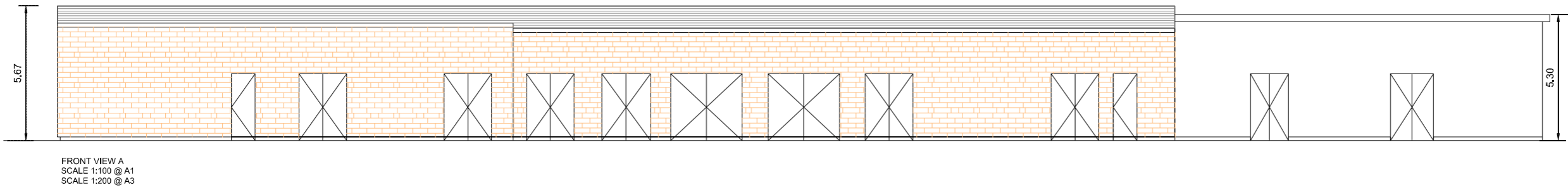
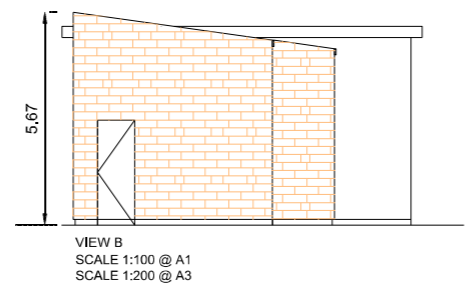


Notes;



POS.	DESIGNATION
A	HIGH VOLTAGE SWITCHBOARD
B1	TRACTION TRANSFORMER 1
B2	TRACTION TRANSFORMER 2
C	AUXILIARY TRANSFORMER
D	DIESEL GENERATOR
E1	TRACK FEEDER CIRCUIT BREAKERS (HSCB)
E2	RECTIFIER FEEDER BREAKER
E3	RECTIFIER
E4	RECTIFIER RETURN BREAKER
J1	UPS
J2	ESSENTIAL LV PANEL (110 V DC DISTRIBUTION)
J3	BATTERY CABINET
N	ESB METER CABINET
T	TELECOM

© Irish Rail (2022). This drawing is confidential and the copyright in it is owned by Irish Rail. This drawing must not be either loaned, copied or otherwise reproduced in whole or in part or used for any purpose without the prior permission of Irish Rail.
 © Ordnance Survey Ireland and government of Ireland. All O.S. Data used for plans are printed under: "Copyright Ordnance Survey Ireland" Survey No. 0039722; (OSI Aerial Data or OSI Lidar Data) & Survey No. 2022/OSL_NMA_180 (OSI Vector Data).
 All elevations are in metres and relate to OSI Geoid Model (OSGM02) Malin Head as defined by existing Project Control. All Co-ordinates are in Irish Transverse Mercator Grid (ITM) as defined by OSI active GPS station Tallaght College (TLLG).



Rev	Date	Drn	Chk'd	App'd	Description
v01	10/11/2022	AA	NF	PT	PLANNING ISSUE

Client: **Iarnród Éireann Irish Rail**

Engineering Designer: **ATKINS** (Member of the SNC Loxton Group)

Supported by: **rps**

Date: 10/11/2022 | Scale: AS SHOWN @ A1, @ A3

Project Code: 5195886 | Issuer: TTA

Drawn: AA | Checked: NF | Approved: PT

QMS Code:

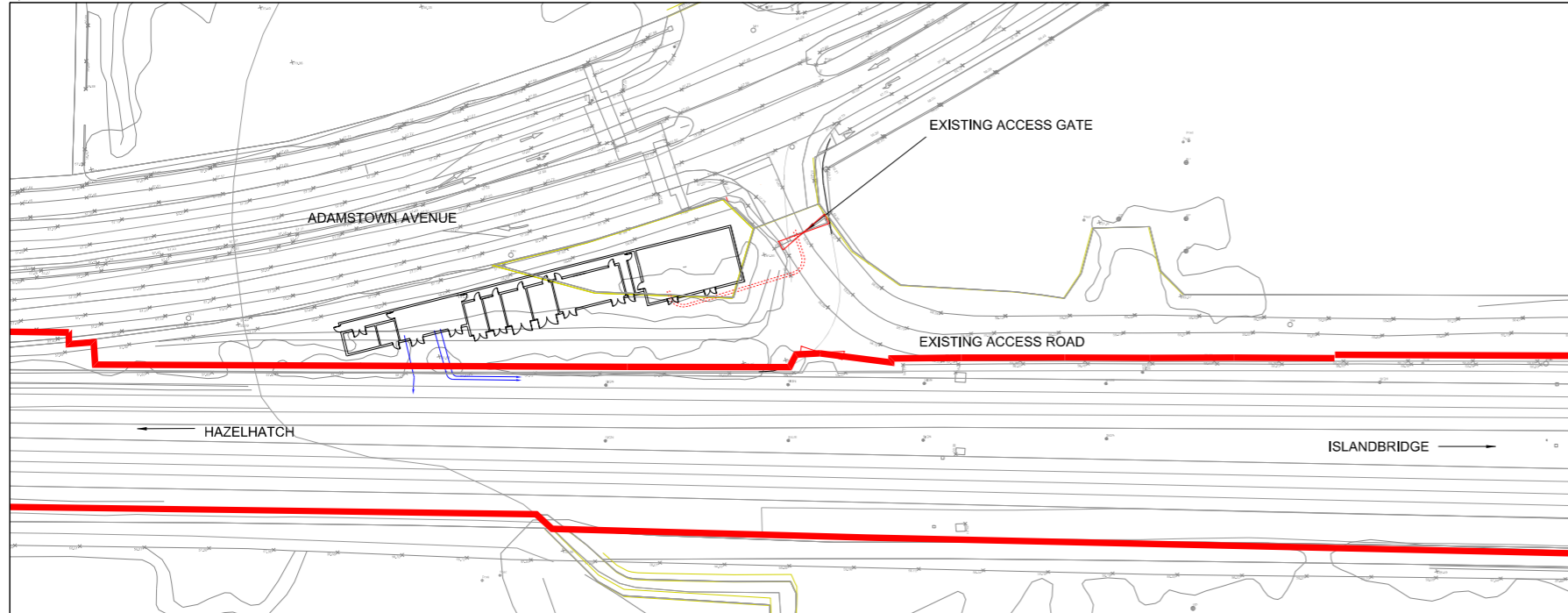
Project Title: **DART + SOUTH WEST**

Drawing Title: **KISHOGE SUBSTATION BUILDING PLAN AND ELEVATIONS**

Drawing File Name: DP-04-23-DWG-RO-TTA-18855

Version: v01 | Status: S3

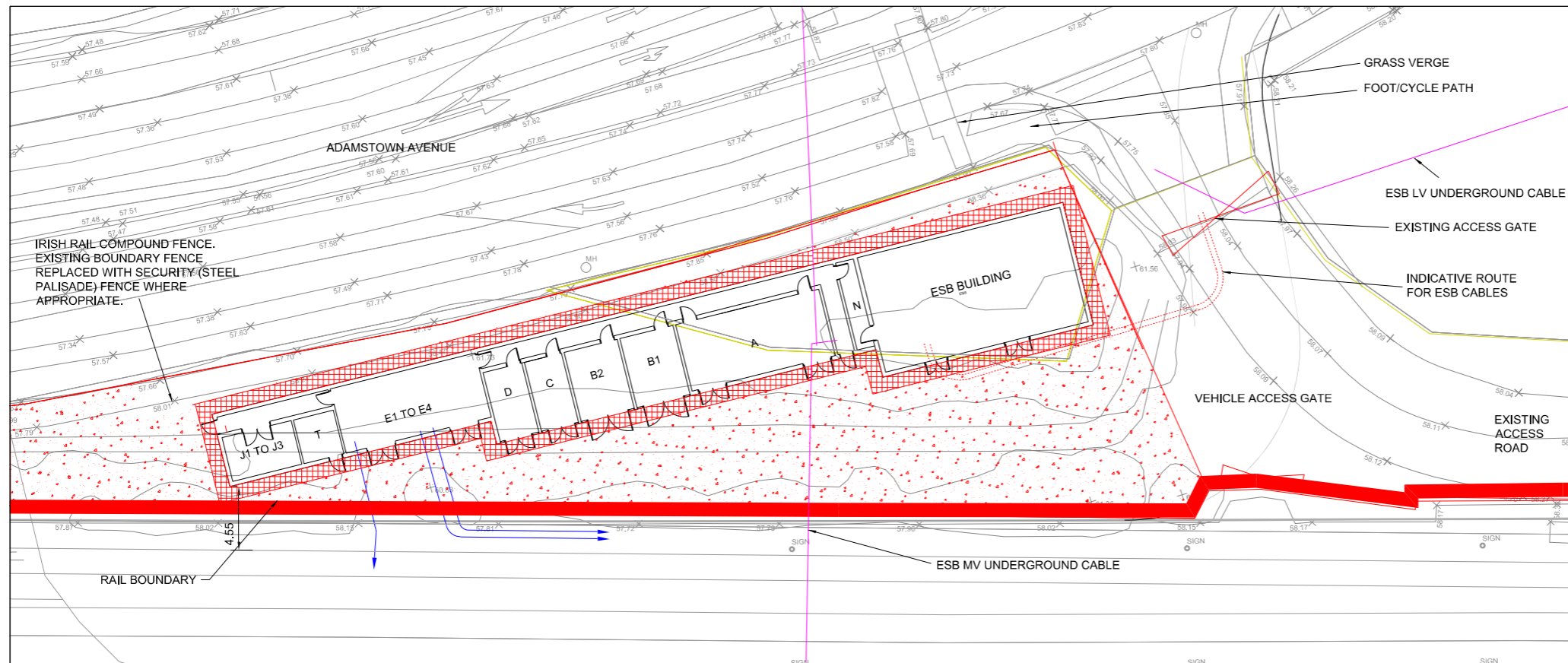
DO NOT SCALE USE FIGURED DIMENSIONS ONLY



SUBSTATION LOCATION PLAN
GRID REFERENCE
LATITUDE: 53.33484 LONGITUDE: -6.43616

SUBSTATION ACCESS PLAN

1:1000 @ A1
 1:2000 @ A3



Notes:

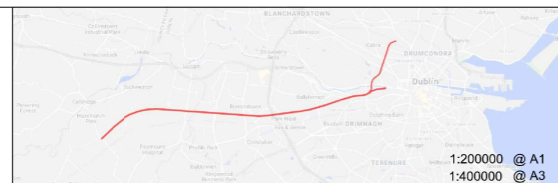
KEY:
 BLUE - INDICATIVE DC CABLE ROUTE
 RED - NEW EQUIPMENT/LAND BOUNDARIES
 MAGENTA - EXISTING BURIED SERVICES
 ESB - ELECTRICITY SUPPLY BOARD

POS.	DESIGNATION
A	HIGH VOLTAGE SWITCHBOARD
B1	TRACTION TRANSFORMER 1
B2	TRACTION TRANSFORMER 2
C	AUXILIARY TRANSFORMER
D	DIESEL GENERATOR
E1	TRACK FEEDER CIRCUIT BREAKERS (HSCB)
E2	RECTIFIER FEEDER BREAKER
E3	RECTIFIER
E4	RECTIFIER RETURN BREAKER
J1	UPS
J2	ESSENTIAL LV PANEL (110 V DC DISTRIBUTION)
J3	BATTERY CABINET
N	ESB METER CABINET
T	TELECOM

SUBSTATION LAYOUT PLAN

1:200 @ A1
 1:400 @ A3

© Irish Rail (2022). This drawing is confidential and the copyright in it is owned by Irish Rail. This drawing must not be either loaned, copied or otherwise reproduced in whole or in part or used for any purpose without the prior permission of Irish Rail.
 © Ordnance Survey Ireland and government of Ireland. All O.S. Data used for plans are printed under: "Copyright Ordnance Survey Ireland" Survey No. 0039722, (OSI Aerial Data or OSI Lidar Data) & Survey No. 2022/OSI_NMA_180 (OSI Vector Data).
 All elevations are in metres and relate to OSI Geoid Model (OSGM02) Malin Head as defined by existing Project Control.
 All Co-ordinates are in Irish Transverse Mercator Grid (ITM) as defined by OSI active GPS station Tallaght College (TLLG).



Rev	Date	Dm	Chk'd	App'd	Description
v01	10/11/2022	AA	NF	PT	PLANNING ISSUE

Client: **Irish Rail** (Iarnród Éireann)

Engineering Designer: **ATKINS** (Member of the SNC-Lavalin Group)

Supported by: **rps**

Date: 10/11/2022
 Scale: AS SHOWN @ A1 @ A3
 Drawn: AA
 Checked: NF
 Approved: PT

Project Code: 5195886
 Issuer: TTA
 QMS Code:

Project Title	DART + SOUTH WEST		
Drawing Title	KISHOGE SUBSTATION LOCATION PLAN AND LAYOUT		
Drawing File Name	DP-04-23-DWG-RO-TTA-18854	Version	v01
Status	S3		

DO NOT SCALE USE FIGURED DIMENSIONS ONLY