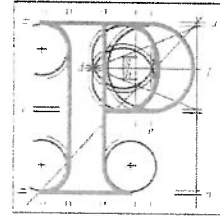


Our Case Number: ABP-320164-24

Your Reference: SID-OBS-002305



**An
Bord
Pleanála**

Lizanne Kelly
30 The Crescent
Binn Eadair View
Sutton
Dublin 13

Date: 17 October 2024

Re: DART + Coastal North Railway Order 2024 - Northern Line between Dublin City Centre and Drogheda including the Howth Branch
Dublin City Centre and Drogheda, located in counties Dublin, Meath and Louth

Dear Sir / Madam,

An Bord Pleanála has received your recent letter and oral hearing request in relation to the above mentioned case. The contents of your letter have been noted. Please accept this letter as a receipt for the fee of €50 that you have paid.

More detailed information in relation to strategic infrastructure development can be viewed on the Board's website: www.pleanala.ie.

If you have any queries in relation to the matter please contact the undersigned officer of the Board at laps@pleanala.ie

Please quote the above mentioned An Bord Pleanála reference number in any correspondence or telephone contact with the Board.

Yours faithfully,

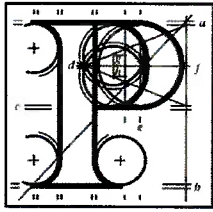
Aisling Reilly
Executive Officer
Direct Line: 01-8737131

RA03

Teil (01) 858 8100
Glaao Áitiúil 1800 275 175
Facs (01) 872 2684
Láithreán Gréasáin www.pleanala.ie
Ríomhphost bord@pleanala.ie

Tel
LoCall
Fax
Website
Email

64 Sráid Maoilbhríde 64 Marlborough Street
Baile Átha Cliath 1 Dublín 1
D01 V902 D01 V902



Observation on a Strategic Infrastructure Development Application

Observer's details

1. Observer's details (person making the observation)

If you are making the observation, write your full name and address.

If you are an agent completing the observation for someone else, write the observer's details:

(a) Observer's name

Lizanne Kelly

(b) Observer's postal address

30 The Crescent, Binn Eadair View, Sutton, D13

Agent's details

2. Agent's details (if applicable)

If you are an agent and are acting for someone else **on this observation**, please **also** write your details below.

If you are not using an agent, please write "Not applicable" below.

(a) Agent's name

Click or tap here to enter text.

(b) Agent's postal address

Click or tap here to enter text.

Postal address for letters

3. During the process to decide the application, we will post information and items to you or to your agent. For this **current application**, who should we write to? (Please tick ✓ one box only)

You (the observer) at the postal address in Part 1

The agent at the postal address in Part 2

Details about the proposed development

4. Please provide details about the **current application** you wish to make an observation.

- (a) **An Bord Pleanála case number for the current application (if available)**
(for example: 300000)

NA29N.320164

- (b) **Name or description of proposed development**

Dart Plus Coastal North

- (c) **Location of proposed development**

(for example: 1 Main Street, Baile Fearainn, Co Abhaile)

Dublin City Centre and Drogheda, located in counties Dublin, Meath and Louth
Dublin City Council

Observation details

5. Grounds

Please describe the grounds of your observation (planning reasons and arguments). You can type or write them in the space below. There is **no word limit** as the box expands to fit what you write.

You can also insert photographs or images in this box. (See part 6 – Supporting materials for more information).

1. Loss of direct DART services

The direct DART services from Howth, Sutton and Bayside to the city centre and beyond are vital to keep our communities connected.

DART services have been running to Bayside, sutton and Howth for 40 years, and a direct train service has been running to Howth Station since 1847.

2. Level crossings

A shuttle DART service operating every 10 minutes in each direction would cause the level crossings to be closed for up to 30 minutes of every hour.

For example, the crossing at Sutton Station could be closed for more than 32minutes of every hour, and the Baldoyle Road crossing could be closed for more than 30 minutes of every hour in a worst case scenario. (Appendix A6.1 Dart+ Coastal North Level Crossing Assessment page 11)

3. Increased traffic

The traffic assessment submitted by Irish Rail as part of their application shows that longer closures of the level crossings will result in more traffic congestion.

5. Grounds

The traffic study states that traffic queues on Baldoyle Road could be up to 59% longer than they currently are. (Appendix A6.1 Dart+ Coastal North Level Crossing Assessment page 29)

This has the potential to impact traffic on the wider road network including buses and cars that aren't passing through the level crossings.

4. Sustainable travel

It is National Policy to encourage people to use sustainable transport instead of their cars.

77% of people who took part in the 2nd public consultation said they would not be encouraged to use the DART over their cars. (Appendix A3.2 PC2 Findings Report page 21)

Furthermore, Irish Rail's 2nd public consultation report found that:

"The loss of direct services to Dublin City Centre was regularly cited in submissions as grounds for existing DART users from the Howth Peninsula to revert from DART usage to private car usage."

- Appendix A3.2 PC2 Findings Report page 33

Removing direct DART services does not align with our national transport and climate policy.

5. Accessibility

A shuttle DART service will require people to transfer DARTs at Howth Junction Station if they want to continue into the City Centre.

5. Grounds

This will cause difficulties for people with disabilities, limited mobility, and wheelchair users where they need to use the lifts in the station.

In 2023 the Irish Independent reported that lifts at Irish Rail stations were marked out of service over 800 times in just 18 months. It can take days, and even weeks for lifts to be repaired.

6. Local businesses

The loss of direct DART services will have significant negative impacts on local business in Baldoyle, Sutton and Howth.

Businesses will have to grapple with delays to their deliveries and longer journey times for staff and customers.

Supporting materials

6. If you wish, you can include supporting materials with your observation.

Supporting materials include:

- photographs,
- plans,
- surveys,
- drawings,
- digital videos or DVDs,
- technical guidance, or
- other supporting materials.

You can insert photographs and similar items in your observation details: grounds (part 5 of this form).

If your supporting materials are physical objects, you must send them together with your observation by post or deliver it in person to our office. You cannot use the online uploader facility.

Fee

7. You **must** make sure that the correct fee is included with your observation.

Observers (except prescribed bodies)

- strategic infrastructure observation is €50.
- there is no fee for an oral hearing request

Oral hearing request

8. If you wish to request the Board to hold an oral hearing, please tick the “Yes, I wish to request an oral hearing” box below.

You can find information on how to make this request on [our website](#) or by contacting us.

If you do not wish to request an oral hearing, please tick the “No, I do not wish to request an oral hearing” box.

Yes, I wish to request an oral hearing

No, I do not wish to request an oral hearing

Final steps before you send us your observations

9. If you are sending us your observation using **the online uploader facility**, remember to save this document as a Microsoft word or PDF and title it with:

- the case number and your name, or
- the name and location of the development and your name.

This also applies to prescribed bodies sending an observation by email.

If you are sending your observation to us by post or delivering in person, remember to print off all the pages of this document and send it to us.