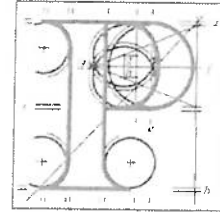


Our Case Number: ABP-320164-24



**An
Bord
Pleanála**

Inland Fisheries Ireland
3044 Lake Drive
Citywest Business Campus
Dublin 24
D24 CK66

Date: 08 August 2024

Re: DART + Coastal North Railway Order 2024 - Northern Line between Dublin City Centre and Drogheda including the Howth Branch
Dublin City Centre and Drogheda, located in counties Dublin, Meath and Louth

Dear Sir / Madam,

An Bord Pleanála has received your recent submission in relation to the above mentioned proposed railway order and will take it into consideration in its determination of the matter.

The Board will revert to you in due course with regard to the matter.

Please be advised that copies of all submissions / observations received in relation to the application will be made available for public inspection at the offices of the relevant County Councils and at the offices of An Bord Pleanála when they have been processed by the Board.

More detailed information in relation to strategic infrastructure development can be viewed on the Board's website: www.pleanala.ie.

If you have any queries in the meantime please contact the undersigned officer of the Board at laps@pleanala.ie Please quote the above mentioned An Bord Pleanála reference number in any correspondence or telephone contact with the Board.

Yours faithfully,


Aisling Reilly

Executive Officer
Direct Line: 01-8737131

RA05

| | | |
|---------------------------|----------------|--|
| Teil | Tel | (01) 858 8100 |
| Glaó Áitiúil | LoCall | 1800 275 175 |
| Facs | Fax | (01) 872 2684 |
| Láithreán Gréasáin | Website | www.pleanala.ie |
| Ríomhphost | Email | bord@pleanala.ie |

| | |
|----------------------|-----------------------|
| 64 Sráid Maoilbhride | 64 Marlborough Street |
| Baile Átha Cliath 1 | Dublin 1 |
| D01 V902 | D01 V902 |

Aisling Reilly

Subject: FW: DART+ Coastal North Railway
Attachments: DART North Rail.pdf

From: Roisin O'Callaghan <Roisin.O'Callaghan@fisheriesireland.ie>
Sent: Thursday, July 25, 2024 1:20 PM
To: Bord <bord@pleanala.ie>
Subject: RE: DART+ Coastal North Railway

Caution: This is an **External Email** and may have malicious content. Please take care when clicking links or opening attachments. When in doubt, contact the ICT Helpdesk.

To whom it may concern

Attached are the comments of IFI in relation to the above application

Kind Regards

Roisin

Roisin O'Callaghan
Senior Fisheries Environmental Officer

✉ Roisin.O'Callaghan@fisheriesireland.ie • ☎ +353 (0)1 8842 600 • 🌐 www.fisheriesireland.ie • 🏠 D24 CK66



Iascach Intíre Éireann
Inland Fisheries Ireland

beolín / hotline
0818 34 74 24
Oscailte 24 uair an lá / 7 lá in aghaidh na seachtaine
Open 24 hours a day / 7 days a week

Help us protect Ireland's rivers, lakes and coastlines by reporting illegal fishing, water pollution or invasive species. Our confidential phone number is 0818 34 74 24, which is open 24 hours a day / 7 days a week.

To read our Privacy Policy and Email Disclaimer Notice, Please visit www.fisheriesireland.ie



**Iascach Intíre Éireann
Inland Fisheries Ireland**

25/07/2024

RE: DART+ Coastal North Railway

We have reviewed the application and associated documentation and make the following observations

- A comprehensive and integrated approach for achieving estuary and river protection during construction and operation should be implemented through environmental construction management planning. The disturbance of riparian habitats should be minimised. An undisturbed buffer zone between development areas and river banks should be maximised.
- To prevent water pollution, before commencing any works, it is strongly advised to ensure that all construction personnel and contractors are made familiar with and adhere to the mitigation measures in any construction phase surface water management plan, construction management and environmental plan, Inland Fisheries guidance on protecting fisheries during construction, construction industry guidance and planning permission conditions pertaining to your site to protect water quality and the wildlife habitat of any watercourses.
- Drainage works should ensure adequate attenuation measures are in place and silt and petrol interceptors, constructed wetland, swales and other nature based solutions should be employed where appropriate to reduce pollutants from the railway and compounds entering watercourses.
- There can be no direct pumping of contaminated water from the works to a watercourse at any time. Any dewatering of ground water during excavation works must be pumped into an attenuation area before being discharged offsite.
- Surface water outfalls to any watercourse must have detail design and subsequent method statements submitted to IFI for approval.
- Any utility diversions that involves crossing of waterbodies should be conducted in a manner that does not allow any deleterious material to discharge to any watercourse. Crossings of watercourses should ideally be by directional drilling and will be subject to an agreed method statement with IFI. Any river or stream manipulation works (bridging, culverting or otherwise) must first be submitted to IFI for



**Iascach Intíre Éireann
Inland Fisheries Ireland**

consultation and approval. The open season for instream construction works in salmonid river systems runs from 1st July to September 30th each year. The timing constraints do not apply to directional drilling which may take place at any time of year.

- It is essential that the receiving foul and storm water infrastructure has adequate capacity to accept predicted volumes from this development with no negative repercussions for quality of treatment, final effluent quality and the quality of receiving waters.
- An agreed detailed design must be sought with IFI for the culvert extension and new bridge over the River Mayne. This is a non-salmonid system, however IFI are currently assessing the viability of a salmonid reintroduction programme. However, the Mayne system does contain populations of European Eel and other fish species.
- It is recommended that the "Guidelines on protection of fisheries during construction works in and adjacent to waters" (2016) be consulted particularly in the vicinity of surface water features.
- IFI have also published the following guidelines which should also be referred to during construction. They can be accessed on our website www.fisheriesireland.ie :

Revised "**Planning for watercourses in the urban environment**" which can provide guidance on site specific measures to enhance, protect, rehabilitate or establish riparian and aquatic habitats.

- A suitably qualified Ecological Clerk of Works (ECoW) should be appointed to oversee the site set-up and construction of the proposed development and the ECoW shall be present on-site during construction works and carry out the water quality monitoring. IFI must be included in an Emergency Response Plan as a notifiable body in the event of water pollution occurring during construction works. Particular attention to activities likely to generate suspended solids and/or other pollutants and the proposals to prevent these pollutants need to be specified.
- It is respectfully highlighted that appropriate environmental protection measures are the responsibility of the developer and contractor involved, and all works are subject to the provision of the Local Government (Water Pollution) Act 1977 (as amended) and the Fisheries (Consolidation) Act 1959 (as amended). Ongoing aquatic ecological monitoring both during construction and operational phases should be implemented.



Iascach Intíre Éireann
Inland Fisheries Ireland

I trust you will take our observations on board.

Kind regards,

Roisin O' Callaghan

Senior Fisheries Environmental Officer
Inland Fisheries Ireland - Dublin
Iascach Intíre Éireann
Inland Fisheries Ireland

Telephone: +353 (0) 1 8842651

Email: roisin.ocallaghan@fisheriesireland.ie