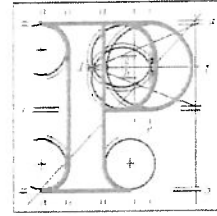


**Our Case Number:** ABP-320164-24



**An  
Bord  
Pleanála**

Howth Sutton Community Council (HSCC) CLG  
c/o Andrew Smith  
The Old Courthouse  
Harbour Road  
Howth

**Date:** 31 October 2024

**Re:** DART + Coastal North Railway Order 2024 - Northern Line between Dublin City Centre and Drogheda including the Howth Branch  
Dublin City Centre and Drogheda, located in counties Dublin, Meath and Louth

Dear Sir / Madam,

An Bord Pleanála has received your recent letter in relation to the above mentioned case. The contents of your letter have been noted. Please accept this letter as a receipt for the fee of €50 that you have paid.

More detailed information in relation to strategic infrastructure development can be viewed on the Board's website: [www.pleanala.ie](http://www.pleanala.ie).

If you have any queries in relation to the matter please contact the undersigned officer of the Board at [laps@pleanala.ie](mailto:laps@pleanala.ie)

Please quote the above mentioned An Bord Pleanála reference number in any correspondence or telephone contact with the Board.

Yours faithfully,

Aisling Reilly  
Executive Officer  
Direct Line: 01-8737131

RA03

**Teil** (01) 858 8100  
**Glaó Áitiúil** 1800 275 175  
**Facs** (01) 872 2684  
**Láithreán Gréasáin** [www.pleanala.ie](http://www.pleanala.ie)  
**Ríomhphost** [bord@pleanala.ie](mailto:bord@pleanala.ie)

**Tel** (01) 858 8100  
**LoCall** 1800 275 175  
**Fax** (01) 872 2684  
**Website** [www.pleanala.ie](http://www.pleanala.ie)  
**Email** [bord@pleanala.ie](mailto:bord@pleanala.ie)

64 Sráid Maoilbhríde 64 Marlborough Street  
Baile Átha Cliath 1 Dublin 1  
D01 V902 D01 V902



Howth/Sutton Community Council CLG.

Comhairle Phobail Bhinn Éadair/Chill Fhionntain CTR.

The Old Courthouse

Harbour Road

Howth

Email: howthsuttoncc@gmail.com

Company Reg.No.375572

<b>AN BORD PLEANÁLA</b>	
LDG-	<u>075675-24</u>
ABP-	
22 OCT 2024	
Fee: €	<u>50.00</u> Type: <u>CASH</u>
	<u>13.60</u> By: <u>HAND</u>

## DART+Coastal North Railway Order Application

Ref: ABP 320164 -24

**23<sup>rd</sup> October 2024**

**Dear Sir/Madam,**

On behalf of the Howth Sutton Community Council (HSCC), we welcome the opportunity to make a submission to An Bord Pleanála in relation to the Railway Order Application.

HSCC is a local voluntary Community Council of more than 20 years standing on the Howth Sutton peninsula. Many of the local clubs and organisations are affiliated, as are many local Resident Associations and individuals. Local County Councillors and TDs are frequently in attendance at our meetings.

Our Community Council had a very productive engagement with the officials from the National Transport Authority concerning the changes proposed for BusConnects Networks redesign. We made comprehensive submissions to the two non- statutory Consultation processes for this project.

We welcome the opportunity to make a submission to An Bord Pleanála regarding the statutory Railway Order. DART+Coastal North Project is a welcome development and will provide necessary public transport in advance of the growing need for rapid access to and from the city and beyond to serve the new home developments along the Northern line.

It is regrettable that Irish Rail see fit to suggest downgrading the Howth Branch line to a shuttle service thus depriving the users of Bayside, Sutton and Howth stations the quality services they currently enjoy. The project fails to take account of the huge tourist numbers of approximately 1.5 million that visit Howth annually, many by DART.

There are serious defects with the details submitted by Irish Rail/ARUP which I have documented in the attached report part 2. Persons with disabilities will have the rights, that they currently enjoy, taken away, I detail those in the report. Regrettably a shuttle service would put school children, students, and others at risk due to the security problems at Howth Junction station. Irish Rail have a duty of care to all passengers both at Dart stations and on the trains.

This presentation provides an overview of the proposal, taking the reader through the issues identified in the documentation seen in Donaghmede

library. We have no issue with the Project Specific Objectives to deliver

- a higher frequency, higher capacity, reliable, electrified DART service.
- solutions which improve the passenger experience; and
- a sustainable, low carbon and climate resilient design solution including making use of existing infrastructure where possible.

However, reading through the Key Infrastructural Elements listed of upgrade works to tracks, stations, signaling, telecoms, power supplies, bridge improvements/ modifications and other works, there is one simple statement: ***“Shuttle service along the Howth Branch”.....!***

As we read through the remainder of the documents, it appears to us that all of the proposed development assumes that this “Shuttle service along the Howth Branch” is an essential element of the “Emerging Preferred Option”. We are seriously concerned that the DART+ Project Team consider this to be a “fait accompli”, and that their focus is currently on convincing users of the Howth Branch that a shuttle service will actually improve their overall travel experience.

Having consulted with current users (commuters, students, shoppers, tourists, etc.) about the proposed “improved” services along the Howth / Sutton / Baldoyle / Sutton Park / Bayside DART route for their views of the plans, we must state clearly that there is huge opposition to any removal of the direct service between Howth and Dublin City and beyond – a shuttle service would be totally unacceptable, for the reasons which we will set out over the following pages in part 1 and 2 of the attached report.

We request An Bord Pleanala to include a Special Condition in its recommendations that the Howth Branch line be allowed to continue as a direct service as the services are currently scheduled. In view of the content and extent of the points raised, and the concerns expressed in this report, we request An Bord Pleanala to take account of this submission in consideration of the application for permission for the subject project. We would appreciate your sympathetic consideration of these observations. We request that an oral hearing take place, we are available to attend and present our views.

Yours faithfully



Andrew Smith

Chairman Howth Sutton Community Council

Enclosed, Fee of € 50.00

# **REPORT PART 1**

## **OCTOBER 2024**

### **1. A shuttle would constitute a downgrade of services to Bayside, Sutton & Howth**

Sounding have been taken from our members in the areas of Bayside, Sutton and Howth. They are vehemently opposed to any attempt to relegate the DART services to a shuttle service. There is no support for what is viewed as a complete downgrading of DART services.

More frequent trains will not compensate for the removal of direct to city trains; in fact, an increase in frequency will be nullified by time delays from having to exit one train, then walk several flights of stairs, cross a foot bridge, wait for an incoming train on the northern line. This could take over 10 minutes depending on whether the train on the northern line is full: and, if so, the wait would be 15 minutes or more for the next train.

### **2. The proposal ignores the planned population increases on the Peninsula**

The Howth Sutton Peninsula has a current population of approximately 11,000 residents. This number is due to increase very considerably in the medium term due to the large number of apartment and housing units already passed through the planning process, and an even greater number is possible in the longer term which could coincide with the date of completion for the DART expansion plans.

It must be noted that the latest developments have been based on access to direct DART links to Dublin City center and beyond: car parking has been provided at 0.7 spaces per unit, and accommodation aimed at professionals working in locations like East Point, the IFSC and Grand Canal Dock.

### **3. The DART service is used by large numbers of First, Second and Third-level students**

Many students attending the schools and colleges on the Peninsula travel by DART from the greater catchment area such as from Clontarf, Killester, Harmonstown, Kilbarrack, Raheny and elsewhere (see Appendix 1). In addition, the DART is used by many students who attend colleges and universities in the city center and in the southern suburbs of the city. Parents and guardians of these students have been satisfied with the safety of their children who board at one point and alight at their destination station. The proposed changes would necessitate four separate train journeys each day. In addition, there is great concern expressed at the prospect for vulnerable school children, young women and young men having to change enroute at an unsupervised and unattended DART station, where school students are often targets of verbal and physical assault. In a recent survey the majority stated that they would no longer use the DART if it became a shuttle service.

**4. The direct DART service is essential for many care givers, nurses, and hospitality staff**

Many staff who work in nursing homes along the Howth branch line come from the city or from areas like Clontarf and Raheny, as well as care givers and nurses who attend to elderly persons in their homes; it is government and HSE policy to ensure elderly persons requiring home help are cared for in their homes rather than transfer to nursing home facilities. A significant number of these workers regularly use the DART as a means of transport. Their work is time sensitive, and travel delays with transfer to and from a shuttle service will greatly impede their work. The same is true for many staff who work in hospitality: chefs, waiters, waitresses, bar persons and cleaners.

**5. Issues regarding the proposed shuttle changeover at Howth Junction/Donaghmede**

Howth Junction/Donaghmede is one of the more important stations on the DART & train northern line because of the intersection of the two lines. It has multiple platforms and complicated line switching gear and transformers for the safe passage of trains and DARTs onwards towards the city.

This station appears to have no security staff on the ground, and remote video surveillance is not adequate for such an important station with a reputation for crime and antisocial behavior.

Current users of the direct Howth/Bray connection have expressed major concerns about their personal security if they have to alight at this station to change trains: not just children, women, elderly passengers, and persons with disabilities, but many fit male passengers have made complaints about the station which can be summarized as follows:

- *Lack of adequate security*
- *Recent history of violent assaults (See Appendix 2)*
- *Poor lighting & slippery stairs*
- *No proper provision for persons with disabilities*
- *Inadequate signage for clearly showing what each platform refers to*
- *Electronic timetables unable to be read properly because of old technology*
- *Drug dealing and taking in the station and on the link bridge*
- *Lifts which are not always working*
- *Poor paving & lighting on walkway from/to Baldoyle industrial estate*

Irrespective of possible security and lighting improvements at this station, the residents of Howth, Sutton and Bayside are adamant they do not want to have to change DARTs here or anywhere else on their normal route to the city or south bound. Irish Rail has a duty of care to all its passengers, and especially to the vulnerable. From a moral, social, and legal point of view it should not be negligent and found wanting in this respect. Irish Rail have a duty of care to properly protect passengers using their facilities. I will deal with what appears to be restrictions in Platform capacity later in this report.

**6. The proposal does not take tourist traffic and preferences into account**

Howth with its many tourist attractions is visited by upwards of 1.5 million tourists each year. It is second only to the Guinness Storehouse as the most visited tourist destination of all in the Dublin area, and annually gets the equivalent number of tourists as Killarney in County Kerry.

Both Tourism Ireland and Fingal County Council have plans to add new attractions to Howth to increase tourist numbers. There are also plans to add substantial tourist attractions to Howth castle including a new golf course and hotel. Restoration of Howth castle will see new facilities added including an event center for up to 150 guests and a large 140-seater restaurant. Two floors of the castle will be converted to tea rooms and café. A number of rooms will be made available for receptions and events. There are plans for other coffee shops and retail shops to be developed in the stable yard area of the castle all of which will bring more visitors to Howth.

Plans for the castle also include a children's playground, pet corner and plant nursery. Apart from the golf course and hotel, it is expected that the plans for the castle will increase visitor numbers to Howth by 1,000 per day. These visitors will be encouraged to use the bus and DART as there is widespread recognition of the appalling traffic congestion and lack of car parking spaces in Howth.

The growth in the use of AirBnB is a hidden factor in the tourist sector. The Howth Sutton area has 350 houses and apartments listed for letting on AirBnB. This is equivalent to the capacity of two hotels. Many of these visitors will rely on DART services to get to the peninsula and travel to the city.

Travel by DART is the preferred mode of transport for visitors to the area, not least because of the road traffic pinch-point at Sutton Cross. A shuttle DART service will greatly degrade the service and will deter some tourists because of the necessity to change trains resulting in four train journeys to and from the city. This could lead to increased use of road transport as the preferred means of travel, which is definitely not a desirable outcome.

Aside from foreign visitors, many Dublin people living along the DART line like to visit Howth for a day out or for a meal in many of our excellent restaurants in Howth. They would not like to have to change DARTS, and many are likely opt to go to the city instead. Our business community would be adversely affected by this proposal.

## **7. DART passenger numbers Howth, Sutton & Bayside show it to be a major transport artery**

The NTA National Rail Census 2022, published May 2023, show that the passengers on the Howth Branch line represent more than 12% of all users from Drogheda to Connolly station. It is totally unacceptable to deprive those passengers of the services that they currently enjoy.

Unfortunately, a separate detailed breakdown of DART/train journeys by time of day is not provided in the National Rail Census 2022. Service at peak times probably represents 80%-90% of all journeys taken. It is unthinkable that the DART services at these three stations would be downgraded to a shuttle.

## **8. The shuttle proposal is contrary to the Dublin Transport Authority Act 2008**

The Dublin Transport Authority Act 2008 no. 15 of 2008 (with reference to the **National Transport Authority (NTA)**, update 1st of July 2019) sets out a list of obligations for service providers. We would like to address how reducing DART service for passengers using Howth, Sutton and Bayside train stations to a shuttle, for a huge number of patrons and visitors to the area, will contravene the above stated objectives of the National Transport Authority Act:

**Section 10 - In exercising its functions the Authority shall seek to achieve the following objectives:**

***a) The development of an integrated transport system which contributes to environmental sustainability and social cohesion and promotes economic progress***

Downgrading DART passengers from Howth, Sutton and Bayside to a shuttle service only, at peak travel times, in the morning (7:00 - 10:00) city direction, and evening (16:00 – 19:00) from the city direction, is contrary to environmental sustainability, social cohesion and promotion economic progress. It would lead to inevitable delays for passengers in transferring from one DART to another one at Howth Junction/ Donaghmede station. It would result in a longer travel time for passengers from Howth, Sutton and Bayside, leading to economic regression rather than progression and the knock-on environmental impact of passengers choosing to use their cars for their daily commute rather than partake of a reduced service.

***b) The provision of a well-functioning, attractive, integrated and safe public transport system for all users***

Downgrading the service to a shuttle does not fulfil the ambition of a well-functioning attractive service, and because of anti-social and security problems at an unmanned station, Howth Junction/Donaghmede it will not be a safe transport system for users. Furthermore, having to disembark one DART for another will result in crowding issues on the station platforms, in addition to the inconvenience of having to climb several stairways & cross a bridge to get from one platform to another.

***c) Improved access to the transport system and, in particular, to public passenger transport services by persons with disabilities***

Downgrading the service would disimprove access to the transport system. Due to the various stairs and bridge crossing involved, having to transfer to a second DART would make the DART inconvenient and potentially inaccessible to most persons with disabilities.

***d) Increased use of public transport system***

Downgrading the service is far more likely to disincentivise many current users from using the DART from or to the three stations involved.

***e) Increased recourse to cycling and walking as means of transport***

It is indeed possible that downgrading the service might



encourage some current users to take to cycling and walking to get to their destination – hardly what the project sets out to achieve!

**f) *Value for money.***

The value for money proposition for the passengers will be greatly diminished due to the inconvenience and increased wait time for not one but two trains per journey.

Many passengers currently using DART have told us that if this is implemented, they will go back to using their car primarily because of the great inconvenience involved and the lack of adequate security at Howth Junction/Donaghmede station.

#### **9. Impact on road traffic at level crossings**

There are four level crossings on the Howth to Bayside line. Currently 11 trains depart Howth at peak morning times between 7am and 10am. During this time period, the level crossings are closed for approximately 17.45 minutes in total. It is proposed to increase the frequency to 24 trains or 6 per hour - that is one train every 10 minutes. This would result in a possible increase in the road closure times at Station Road Sutton, and at the Baldoyle Road, of up to 30 minutes every hour at these peak commute times, and to be repeated at the evening peak times.

This situation, if allowed to occur, would cause absolute chaos at Station Road Sutton and would see back-up of traffic to and across Sutton Cross which, for road traffic, is already at overcapacity at peak times. This has been recognized in several recent surveys conducted as part of apartment developers' obligations to submit these reports, as part of their planning applications. Furthermore, traffic will also back up and cause huge delays in Baldoyle. These level crossing not only impede cars but also buses, pedestrians, and cyclists, and will be particularly disruptive to school going students at the critical morning period. The same can be expected for peak evening traffic.

The reports compared closure times on the south side of Dublin and the western areas and concludes that the increased closures would be similar to those. However, these areas have alternative routes which means that train crossings can be avoided. This regrettably is not available on the Howth Branch line. So, the comparison is meaningless.

## **VIEWS ON A SHUTTLE SERVICE**

Soundings have been taken from in the areas of Bayside, Sutton and Howth. There is no support for what is viewed as a complete downgrading of DART services, and they are vehemently opposed to any attempt to relegate the services to a shuttle.

More frequent trains will not compensate for the removal of direct to city trains. In fact, an increase in frequency will be nullified by time delays from having to exit one train, then walk several flights of stairs, cross a footbridge and wait for an incoming train on the northern line. This could take over 10 minutes, depending on whether the train on the northern line is full and, if so, the wait would be 15 minutes or more for the next train. There is great understandable concern that DARTS arriving at Howth Junction/Donaghmede and further down the line could arrive full, leaving passengers unable to embark the train. There will certainly be no available seating at that point, especially as Irish Rail intend removing some seats from each carriage.

We urge Irish Rail to continue with the direct to city DART services for the huge number of current users: residents, students, commuting workers, and tourists. We hope that this submission will demonstrate the dynamic inputs and significant changes to the area that already has put great pressure on the transport needs for the area. Any changes to the DART system must take these into account, and not make travel needs more difficult.

The Howth/Sutton Community Council successfully campaigned against the Busconnects proposals to remove all direct Howth/Sutton bus connection to the City Centre, to be replaced by a shuttle service to and from Raheny. The original proposal from the BusConnects project team was that passengers would alight at Raheny and transfer to other buses which would already have passengers aboard – they displayed a complete lack of understanding of the transport needs of current bus users: residents, students, commuting workers and tourists. The outcome of the negotiations has resulted in an improved seven-day bus service, particularly to the South side of the Howth Peninsula – if National policy is to encourage people to use public transport, the solution must be to provide a service which will encourage community support.

There is therefore an onus on Irish Rail to continue with the existing direct DART service without the inconvenience and disruption of having to transfer to a second DART train. A far more fundamental, imaginative, and forward-looking approach to our DART Coastal North, and indeed to mainline rail and integrated transport, is required than what is outlined in the current proposal.

## **Appendix 1: School student numbers 2024**

<b>School</b>	<b>Current Student Numbers</b>
St. Fintan's High School	703
St. Fintan's National School	444
Burrow National School	220
Howth Primary School	363
Santa Sabina College	671
Sutton Park School	300
<b>Total</b>	<b>2,701</b>

## Appendix 2: Security issues

The following are some of the recent press headlines which clearly demonstrates that security on the DART and at the stations has become a huge issue. Before spending a reported €1.1 billion on upgrading the DART infrastructure, the security issues must first be seriously tackled. Safety must be clearly demonstrated before passengers can have belief that a secure mode of travel is worth spending such a large sum on its upgrade. This is necessary to regain their trust in the DART as a safe and secure mode of transport:

**11<sup>th</sup> May 2024 Man in his 30s seriously assaulted in a frenzied attack at Howth Junction station**

<b>Irish Mirror 22<sup>nd</sup> March 2022:</b>	<b><i>'Woman loses teeth after being kicked in the head during random horror Saint Patrick's night DART attack'</i></b>
<b>Irish Times 5<sup>th</sup> January 2022:</b>	<b><i>'Two youths plead not guilty to violent disorder at Dublin DART station'</i></b>
<b>Irish Times 22<sup>nd</sup> November 2021:</b>	<b><i>'More than €500,000 of graffiti damage done to DART carriages in 2021'</i></b>
<b>Irish Mirror 11<sup>th</sup> May 2021:</b>	<b><i>'Gang who pushed teenage girl underneath a train behind more attacks'</i></b>
<b>Irish Times 9<sup>th</sup> December 2019:</b>	<b><i>'Security alert for DART getting 60+ passenger texts monthly'</i></b>
<b>Irish Mirror 3<sup>rd</sup> December 2019:</b>	<b><i>'Schoolgirl viciously mugged and assaulted by gang on DART service'</i></b>
<b>Irish Independent 22<sup>nd</sup> June 2018:</b>	<b><i>'Drivers warn they won't go into' bandit county' as DART safety fears'</i></b>

# **REPORT PART 2**

## **OCTOBER 2024**

### **PROPOSED CHANGES**

Under the proposed DART+ Coastal North project, Irish Rail are planning to extend the DART service from Malahide to Drogheda, serving all intermediate stations. Under the proposed Irish Rail plan, the DART services from Howth, Sutton and Bayside to Connolly Station during the 3-hour morning and evening peaks will no longer operate. Instead, a shuttle DART train services will run from Howth Dart station to Howth Junction and Donaghmede station to link with the DART line from Malahide and the new Dart extension to Drogheda.

Passengers on the shuttle will alight and wait for a DART train which has originated in Drogheda, Malahide or Clongriffin. The DART from Drogheda will have stopped at Laytown, Gormanston, Balbriggan, Skerries, Rush & Lusk and Donabate before reaching Malahide and joining the existing DART network

The following is the planned frequency of trains to Dublin City direction during the morning 3-hour peak.

Drogheda, 5 trains to Connolly per hour originating in Drogheda.

Malahide, 7 trains per hour, 2 originating in Malahide.

Clongriffin, 9 Trains per hour, 2 originating in Clongriffin.

Howth, 6 shuttle trains operating each way per hour only to Howth Junction/Donaghmede.

Many of these DART trains will be full on reaching Howth Junction. Passengers who travel by shuttle from Howth, Sutton or Bayside to Howth Junction will have to wait a length of time for a train with capacity to accommodate them. The current timetabled journey time to Connolly is approximately 25 minutes. The journey time under the proposal will be significantly in excess of this, Irish Rail cannot give information on the revised times. We object strongly to the loss of the direct Howth to Connolly Station services and beyond and its replacement with a service which will not and cannot be reliable.

## **Users of the DART System**

The DART system is currently used by many different groups. Reliability is essential:

- People travelling into the city to work and returning during the evening peak.
- School students, some travelling towards the city to school, some travelling in the opposite direction to schools in the Howth/Sutton/Baldoyle areas.
- Third level students from the area travelling to and from the city attending universities and colleges.
- People with physical disabilities who currently require special help to board and alight from DART trains. A break in journey necessitating a change of train and a crossing of the overbridge, several stairs/lifts will cause serious problems.
- Tourists travelling to Howth. Howth is now a major tourist destination in the country. It is estimated that 1.5 million tourists visit Howth annually, many using the DART. The proposal will cause them undue difficulty, confusion and may deter many from making the trip to Howth which will have an adverse impact on the businesses including, travel guides, restaurants, cafés, pubs and shops.

## **Population Increase in Howth & Sutton**

It is proposed to implement the DART+ Coastal North proposal while significant new apartment developments on the Howth Peninsula are currently in progress. These will increase the population of Howth by **22%** and the population of the overall Howth/Sutton area by 16%. The largest of these is the Claremont development Howth with 512 apartments. There is parking provision of only 0.7 car parking space per apartment regardless of whether, one, two or three bedrooms. This is likely to leave a shortage of over 500 car parking spaces. This huge deficit of parking at this site will make public transport even more critical and was a key reason to granting planning permission for these apartments near Howth DART train station.

The population increase will coincide with the downgrading of the DART Howth branch line to a shuttle only service if that were to take place.

## **Shuttle only to Howth Junction from the Howth branch line**

Those using the proposed Howth to Connolly service will have to wait on the platform at Howth Junction to catch the train from the Drogheda/Malahide direction. On the return journey they will be dropped at Howth Junction to wait for the shuttle towards Howth.

The proposal indicates that transfer will be made from the shuttle to the incoming DART travelling in the city direction without having to cross over rails. However, on the return journey it will be necessary to use the overbridge, multiple stairs and/or lifts. Lifts throughout the current DART systems are unreliable and frequently out of action, persons with mobility issues would be left stranded.

It is understood that Irish Rail is including some refurbishment of Howth Junction Station in its application. This is to be welcomed but will not resolve the problem of

antisocial behaviour in the vicinity of the station. Howth Junction has witnessed incidents of serious anti-social and criminal behaviour over many years, the latest serious incident in May 2024. Unless adequate security is always in place, it will continue and may increase with the increased numbers of passengers waiting at the station. The nearest Garda station serving the area, and this DART station is in Raheny, which is too far away. Cameras and extra lighting will not provide the needed security. School students and elderly passengers standing on platforms awaiting transfers especially in winter months will be an obvious target for those engaged in such behaviour.

### **Motor traffic problems in the Howth Sutton area**

There are 4 level crossings through which trains to and from the Howth branch pass. The Irish Rail proposal is for 6 shuttle trains per hour in each direction. The introduction of a shuttle service with DARTs running every 10 minutes in each direction will lead to longer closures at level crossings.

The effect of the extra closure times on the Baldoyle Road and Sutton Station crossings could be catastrophic. Traffic queues will stretch in each direction much further than at present. This is acknowledged by Irish Rail. There is a danger of the traffic queues stretching back through Sutton Cross during closure of the Sutton Station Road crossing and a danger of queues extending beyond the Baldoyle Road onto the sea front road during closure of the Baldoyle road crossing, causing gridlock in the area and delaying emergency services including crew members arriving to launch the Howth Lifeboat.

In addition, the frequent closure of the Lauders Lane and Howth Lodge crossings will cause serious problems for users, in particular residents of Howth Lodge who have no alternative means of accessing their homes and, golfers playing in Sutton Golf Club who use the crossing twice in every nine holes.

The Shuttle concept risks traffic gridlock at Sutton Cross & the Baldoyle Road/Howth Road intersections. If the number of shuttle trains is reduced it will reduce the gate closure times but increase the waiting time for a train. 3 shuttle trains per hour could mean a wait of up to 20 minutes at Howth Junction. This is obviously unacceptable.

An examination of the documents made public in Donaghmede library, including the pre planning presentations, show a confused and contradictory explanation of what the true position is as regards closure times and their effect on queue lengths for all four road crossings on the Howth branch line.

It is acknowledged in the document **“that vehicle queues may block back at the Kilbarrack northbound arm in the PM peak”** Yet in a pre-planning meeting with ABP it is stated that **“Sensitivity analysis shows that queue lengths are predicted to remain the same within traffic queueing road space in all cases”**

We believe that independent analysis must be provided to An Bord Pleanála and made available to the public. We note that 13 meetings were held with Fingal County Council 3 of which concerned the effects of road crossing closures at the four locations on the



Howth branch line. These took place on the following dates: 3<sup>rd</sup> December 2021, 22<sup>nd</sup> June 2023 and on 10<sup>th</sup> July 2023, these meetings related specifically to **The Level Crossings & Traffic and Operations**. The minutes of those meetings must be made available to the public and submitted to An Bord Pleanála as part of the planning process. I could find no minutes of those meetings in the documents made available to the public. This is a requirement in accordance with **39 (1) (c) Transport (Rail Infrastructure) Act, 2001**.

Those meetings are essentially pre planning meetings like the pre planning meetings documents from which were released late to the public by letter from ARUP on 9<sup>th</sup> September 2024.

Fingal County Council have overall responsibility for road management issues, and in the interest of separation of responsibilities, and for independent verification of the effects on traffic flows and delays at the crossings and junctions, Fingal should undertake and provide analysis to an An Bord Pleanála.

### **The Traffic Count Survey Data**

The Traffic Count Survey was carried out on Tuesday 24<sup>th</sup> May 2022, Thursday 11<sup>th</sup> May 2023 and Tuesday 14<sup>th</sup> May 2024. It would also be more appropriate to include some days in summer in the survey to arrive at a more realistic average of traffic volumes particularly as the Howth area experiences over one million tourists annually. We note that no weekend days were included in the survey this further omission leads to an unrealistic average and therefore cannot be relied upon to properly evaluate the disruptive effects on road traffic and train crossing closures from a shuttle Dart service.

An Bord Pleanála should request Fingal County Council, who have responsibility for roads, to conduct an independent realistic road volume survey and factor in the future traffic volumes which will arise from the known apartment and house builds on the Howth Peninsula. No attempt has been made to factor in the 22% growth in the population of Howth which is imminent.

These significant increases in population growth cannot be ignore my Irish Rail, and in and of itself is a good enough reason not to downgrade the Howth DART branch to a shuttle service. Even if some services off-peak are direct services, for the less busy periods, the majority of passengers, perhaps 80-90%, would be subject to a poor shuttle service which is unacceptable. Irish Rail are unable to provide indicative timetables of what they have in mind.

## **Platform Capacity Planning**

No evidence of platform capacity planning has been provided in the documents made public. This is a requirement under **Section 39 (2) (b) (i) Transport (Rail Infrastructure) Act, 2001**. This is an essential element given that the Howth Junction & Donaghmede station would have to accommodate the passengers from four stations in the event of a shuttle Dart service. The four stations are: **Howth, Sutton, Bayside and Howth Junction/Donaghmede**. This is a huge change for Howth Junction station in terms of passenger accommodation and safety. It leads to a **201% increase** in handling capacity at this station.

**Daily Passenger boardings numbers at Howth Junction/Donaghmede 1460, will rise to 4402 when shuttle passengers from Bayside 781; Sutton 911 and Howth 1250, use the station, an increase of over 200 percent. All figures are from Irish Rail/ARUP Report, See Table 6-14, EIAR Volume 2: Chapter 6, Traffic & Transport. (Passenger numbers year 2022)**. These numbers are also contained in the National Transport Authority National Rail Census Report 2022, Published May 2023.

The plans indicate an extension to Platform 2. This extension is a very long and narrow extension of 64m.by 4m. However, when the step-back to the yellow line of 1m. is deducted from the space, the usable space is 64m.by 3m. International standards show that a space per passenger should be at least an area of 0.93 sqm.

From a safety point of view, this width can only accommodate three passengers' side by side as they progress along this extended and narrow platform. Passenger flow modelling should be carried out due to the restricted nature of this extension. Will overcrowding occur in the event of delayed trains on the Northern line or incoming Darts full and unable to take all passengers from the shuttle service? What measures are in place to safely control passenger movements on the platforms in that event, none have been submitted to An Bord Pleanala with this application.

Howth Junction station has no staff on the ground to control and assist passengers in the event of large crowds having to be accommodated on platforms, for example, going to big events such as pop concerts, football matches, Public Holiday events in the city, Howth Maritime festival etc. Irish Rail, who are proposing a shuttle service on the Howth branch have a duty of care to ensure that passenger safety is a priority at Howth Junction/Donaghmede.

We see no documentary evidence that the physical redesign of this station has incorporated measures to accommodate the significant footfall it is proposed to take from a shuttle service. Appropriate analysis of passenger numbers and platform movement dynamics has not been included in the documentation presented to An Bord Pleanala and made public. This is needed considering the radical increase in passenger numbers and the significant physical changes to platforms 2 and 3.

## **Palisade Fence Proposed for Howth Junction & Donaghmede Station restricting and reducing Platform size available for passengers**

The triangular area between Platforms no. 2 and 3, according to the plans, is to be ringfenced with Palisade fencing and it appears that passengers will no longer be able to access this area. There is no explanation as to why this restriction in passenger space is necessary. A full explanation is a requirement under **Sections 39 (1) (a) (c) (e) Transport (Rail Infrastructure) Act, 2001.**

The plans show two new buildings to be placed in this area to accommodate a new **Signalling Equipment** building a new **Telecoms Equipment** building, and palisade fencing is to be placed around an **existing Signalling Equipment** building. There appears to be adequate real estate at this station to put these buildings elsewhere without taking away valuable passenger platform space, particularly as this station must accommodate passengers from three other stations in the event of a shuttle service. **The capacity of this station will increase by 201% in the event of a shuttle service.** Restricting space like this is unacceptable. The Palisade fencing will severely restrict passenger free movement on this the widest part of the platforms 2 & 3. It would severely restrict movement of passengers to a very long and narrow platform which would encourage some passengers to run and cause pushing thus endangering slower moving passengers, disabled passengers and children.

There is a real safety issue for passengers should these platform changes be put in place. Having taken measurements of Platforms 2 and 3 and allowing for the extension to Platform 2, it appears that **the overall platform physical space for passengers would be reduced by approximately 20%.**

The huge increase in passenger numbers documented above has clearly not been accounted for, yet the plans and documents show a reduction in the platform capacity. This leads to safety concerns, we ask An Bord Pleanala to fully investigate why this has not been addressed by Irish Rail/ARUP in their reports.

The passenger space for those using Platform 3 also appears to be severely restricted. In the event of downgrading the Howth branch line to a dart shuttle, platform 3 is the one proposed to accept passengers from the Howth branch where they must wait for a Dart incoming from the Drogheda direction. The Palisade fencing would mean their flow movements would be severely restricted and relegated to travel along a narrow fenced off area to access Platform 3 from Platform 2.

We urge An Bord Pleanala to investigate this matter in detail, and insist that Irish Rail reconsider this development. A duty of care lies with those responsible for a major restriction in platform capacity when passengers from three stations would have to alight onto Platform 2, every 10 minutes, should a shuttle service be introduced. There is no evidence provided as to best practice being followed in relation to platform redesign and passenger capacity planning. This type of analysis can be seen in other countries when new or redesigned train stations take place.

## POPULATION GROWTH IN HOWTH

The Irish Rail/ARUP report on **Population**, table 7-6, shows the Electoral Division Population 2022 (CSO, 2022) data. The data for **Howth** shows a population of 8369 (2022) and a percentage growth rate of **+0.9% 2022 compared to 2016**.

However, it would be misleading to draw any conclusion from those figures as the current picture is now radically different because of the huge building developments that are current underway in Howth as evidenced from the data supplied below.

The current facts as regards the number of apartment and house developments in Howth are as follows:

512 Claremont apartments  
180 Balscadden  
36 Main St Howth  
32 Graymount  
7 Bandhall Balglass Road  
8 Osprey Kilrock Road  
8 Tackett's Lane Howth Village  
7 Thormanby Road  
41 Sommerville Thormanby Road

=====

**831 TOTAL**

One of the reasons given for granting planning permission to the developers of apartments was because of their nearness to Howth DART station. The downgrade of the Howth DART branch to a shuttle only service would make a mockery of that decision. These building developments will further increase the passenger capacity pressure on Howth Junction & Donaghmede Dart Station.

At an occupancy rate of 2.2 persons per dwelling that means that the population of Howth will grow by approximately 1,828 persons in the very near future. Expressed as a percentage of the Census 2022 population for Howth, 8369, this gives a **growth rate of 22% in the population of this area**.

## **RIGHTS OF INDIVIDUALS WITH DISABILITIES**

The reports submitted to An Bord Pleanála indicate in tables, 10.5.1, 10.5.2 and 10.5.3 the various policies and guidelines that the project has had due regard to, unfortunately, we see no regard to the important rights that apply to passengers.

The assessment should have had regard to the following: (a) Dublin Transport Authority Act 2008, (b) Charter of Fundamental Rights of the European Union, (c) United Nations Declaration of Human Rights. We set out below where the rights of persons with disabilities would be violated should the DART services, that they currently enjoy, be downgraded to a shuttle service from the three stations, Bayside, Sutton and Howth, because of the DART+ Coastal North project. Not only regular passenger users from those stations but persons with disabilities from far and near who currently use the Dart services into and out of those stations would have the rights, that they currently enjoy, denied to them. Should these changes go ahead without due care and attention to their legal rights, it not hard to imagine that legal action might be the only recourse available to effect a remedy.

They would effectively be excluded from using the DART because of the difficulty of having to use four Darts to travel in and out of the city and beyond. Then the difficulty of having to avail of a complex of stairs or lifts and a crossover bridge and different platforms at Howth Junction/Donaghmede Dart station, in a station where passenger numbers would increase by more than 200% (NTA own numbers) and on platforms that are reduced in size by at least 20%. The platforms are proposed to be reduced to narrow lanes because of Palisade fencing. The following is a list of passenger rights that would be infringed:

1. **Violates the Charter of Fundamental Rights of the European Union Articles: 3,12,14,20,21,24,25,26,36,38,41(2)(a), 41(1), 45 and 52(6)**
2. **Violates Dublin Transport Authority Act 2008: Objective 10(c) 10(c) "improve access to the transport system, and in particular, to public passenger transport services by persons with disabilities**
3. **Violated areas other than at 12 above can be found in the two submissions, Dublin Transport Authority Act 2008, from Howth Sutton Community Council**
4. **Violates the Disability Act 2005: Particularly Part 3, Section 25 and 26**
5. **Violates six of the 30 Articles: United Nations Declaration of Human Rights: Particularly Article 21 no.2: "Everyone has the right to equal access to public services in the country". Also, Articles, 2,3,7,8 and 13.**
6. **Violates Article 9 no. 1 of the United Nations Convention on the Rights of Persons with Disabilities (CRPD): 1, "To enable persons with disabilities to live independently and participate fully in all aspects of life, State Parties shall take appropriate measures to ensure to persons with disabilities access, on an equal basis with others, to the physical environment, to transport"--- These measures, which shall include the identification and elimination of obstacles and barriers to accessibility,**

shall apply to, inter alia: a) Buildings, roads, **transport** and other indoor and outdoor facilities, including schools, housing, medical facilities and workplaces;”--- 2) “**States Parties** shall also take appropriate measures: a) To develop, promulgate and monitor the implementation of minimum standards and guidelines for accessibility of facilities and services open or provided to the public;”

## **GOVERNMENT CAMPAIGN on the RIGHTS of INDIVIDUALS with Disabilities**

The Governments ran an extensive publicity campaign in the Press, TV, Radio and Internet (October 2023) which reminded us of the following:

### ***Disability Rights are human rights***

***The United Nations Convention on the Rights of Persons with Disabilities matters to everyone. Everyone who has a disability or who knows someone with a disability. We all have a part to play in building a more inclusive society. And a responsibility to protect the human rights of disabled people.***

***This journey is important to all of us.***

***Because disability rights are human rights.***

**Rialtas na hEireann**

**Government of Ireland**

Visit [gov.ie/UNCRPD](http://gov.ie/UNCRPD)



# Disability rights are human rights.

The United Nations Convention on the Rights of Persons with Disabilities matters to everyone. Everyone who has a disability or who knows someone with a disability. We all have a part to play in building a more inclusive society. And a responsibility to protect the human rights of disabled people.

This journey is important to all of us.  
**Because disability rights are human rights.**



Rialtas na hÉireann  
Government of Ireland



*The Sunday Times*



15-10-23

Visit [gov.ie/UNCRPD](http://gov.ie/UNCRPD)

# Disability rights are human rights.

The United Nations Convention on the Rights of Persons with Disabilities matters to everyone. Everyone who has a disability or who knows someone with a disability. We all have a part to play in building a more inclusive society. And a responsibility to protect the human rights of disabled people.

This journey is important to all of us.  
**Because disability rights are human rights.**



Rialtas na hÉireann  
Government of Ireland

Sunday: 15-10-2023 *Business Post*



## **INADEQUATE PUBLIC NOTIFICATION OF STATUTORY CONSULTATION**

It is regrettable that notification of this statutory process did not inform the public in all leading national press publications. We note that only one national newspaper carried the required notification. It was not publicised in the Irish Times. Furthermore, the documents were not sent to Howth library nor to Baldoyle for public scrutiny, the very areas that are most affected by the proposed downgrading of Dart services to a shuttle service on the Howth branch line.

## **SAVE OUR DIRECT DART SERVICES PETITION**

There has been an overwhelming positive response to the petitions conducted against a shuttle DART service on the Howth Branch. At the recent Maritime Festival in Howth, in the space of eight hours, over the two days, we collected **951 signatures**. The online petition (change.org) started by **Cian O'Callaghan T.D.** at the time of writing has **4,327 signatures**. **This is a huge testimony to the level of opposition in the community to downgrade the DART train services from the Howth Branch that has been in operation to and from the city for over 177 years!**

## **CONCLUSION**

We request An Bord Pleanála include a **Special Condition** in its recommendations that the Howth branch line be retained as a direct service to and from the city. This could be achieved by reconfiguring the Darts on the Northern branch, for example not picking up passengers from all stations to the city thus arriving quicker at Connolly station and allowing more frequent trains. The stations not served can be served by the Darts from Howth.

Best integration from the two lines in the most time efficient manner should be modelled which could achieve the same desired outcome of more Darts per hour on the Northern line and retain the Howth direct service to and from the city even if that results in the current frequency of services from the Howth branch be retained at current frequency levels or increased less than what is envisaged in this project.

The passengers on the Howth Branch Line represent more than **12%** of all passenger boardings (all stations Drogheda to Connolly), total all stations, 23,869, Howth Branch Line 2,942 (data from NTA National Rail Census Report 2022, published May 2023).

In view of the content and extent of the points raised in this report and noted herein on behalf of Howth Sutton Community Council we request An Bord Pleanála to take account of this submission in their consideration of the application for permission for the subject development. We would appreciate your sympathetic consideration of these observations. We request that an oral hearing take place and we are available to attend and present our views.

**23<sup>rd</sup> October 2024**

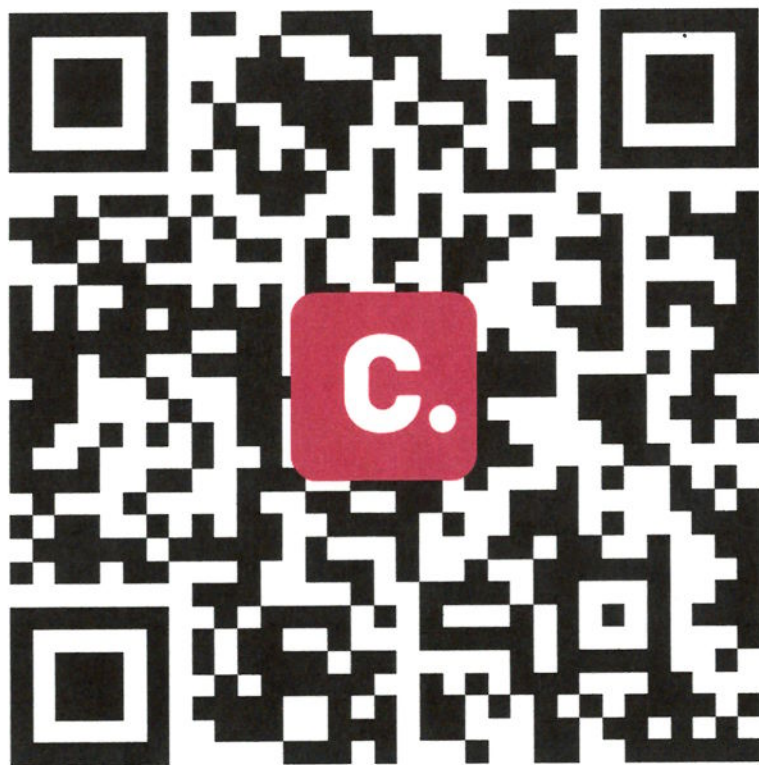
# Save direct DART services to Howth, Sutton and Bayside

Irish Rail has lodged their planning application to An Bord Pleanála for DART+ Coastal North.

It proposes replacing direct DART services to Bayside, Sutton and Howth with a shuttle DART from Howth Station to Howth Junction and Donaghmede station.

These changes will have a huge impact on residents and commuters and there is strong opposition in the local community.

We are calling on Irish Rail, The National Transport Authority, and the Minister for Transport to keep our direct DART services.



**Scan the QR code to sign the petition and show your support!**

# **COPY OF PETITION SAVE OUR DART**

## **HOWTH MARITIME FESTIVAL**

**held**

**Saturday & Sunday 7<sup>th</sup> and 8<sup>th</sup> September 2024**

**951**

**Signatures Protesting against Downgrading  
the DART train Services on the Howth Branch  
Line which have been direct services to and  
from the city for more than 177 years!**

**NOT FOR PUBLICATION**

SAT: 7-9-2024

# Save direct DART services to Howth, Sutton and Bayside

Irish Rail has lodged their planning application to An Bord Pleanála for DART+ Coastal North.

It proposes replacing direct DART services to Bayside, Sutton and Howth with a shuttle DART from Howth Station to Howth Junction and Donaghmede station.

We are calling on Irish Rail, The National Transport Authority, and the Minister for Transport to keep our direct DART services.

Name	Address
Zara Connolly	Island View, Balkill Road, Howth
Carrie Hegg	Sandywest D 4
Gerard Langford	38 Effington Lane D13
David Healy	54 Evora Park
Rama	54 Evora park
Shirley Linn	4 Byron Heath Sutton
Lin Velly	Dungriffin Rd Howth
Miriam Kelly	Dungriffin Rd Howth
Leanne Connell	15 Finlatter, Harbour Rd, Howth.
Marika Ploman	14 Seaview Terrace, Howth
Rakout Hobbs	Parkmount Tharmanes Rd Howth
Christina Clare	APARTMENT 1, ST LAWRENCE BUILDING
Yvonne Kelly	Apartment 1, St Lawrence Building, Howth
Paula Middleton	27 Glencarrow, Sutton D13
Arla Hall	St. Clare Lane Ballyke
Sacha Ni Ghallachóir	55 Main Street Howth
KATHARINE JONES	55 MAIN STREET, HOWTH.
Ema Baird	30 St. Finian's Crescent, Sutton
Paula Murray	44 Dunlavin Drive, Sutton
Geirgus Murray	44 SILECARTER DRIVE, SUTTON

# Save direct DART services to Howth, Sutton and Bayside

Irish Rail has lodged their planning application to An Bord Pleanála for DART+ Coastal North.

It proposes replacing direct DART services to Bayside, Sutton and Howth with a shuttle DART from Howth Station to Howth Junction and Donaghmede station.

We are calling on Irish Rail, The National Transport Authority, and the Minister for Transport to keep our direct DART services.

Name	Address
Jade Boyle	Harbour View, Howth
Emilia Curran	Grace O'Malley Rd, Howth.
Cara Fitzpatrick	4 Seaford Street Sutton
Gráinne Broaders	9 Mayclare Ave Ballydoyle.
Andy Jones	4 Renascence Church, Howth
Patricia Westphal	4 Seabury Gardens Malahide
Tara Westphal	4 Seabury Gardens, Malahide
Christopher N. Bottom	Marne Villas, Phoenix Park, Dublin D07
John O'Shea	24 Bayside Rd Howth
Aisling Cooke	Bayside
Anthony Halligan	WAREN ROAD RD. BALLYDOYLE.
Tomy Hennigan	26 Templeview Walk Clave Hall
Nicola Hennigan	26 Templeview Walk Clave Hall
Gerth Hennigan	26 Templeview Walk Clave Hall
Christine O'Sullivan	26 Templeview Walk Clave Hall
Orla Flood	33 Woodside Howth
Laura White	30 Warrington Rd D15
Andy O'Shea	"
John Reel	"
Abigail Kelly	"

# Save direct DART services to Howth, Sutton and Bayside

Irish Rail has lodged their planning application to An Bord Pleanála for DART+ Coastal North.

It proposes replacing direct DART services to Bayside, Sutton and Howth with a shuttle DART from Howth Station to Howth Junction and Donaghmede station.

We are calling on Irish Rail, The National Transport Authority, and the Minister for Transport to keep our direct DART services.

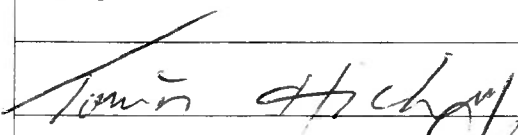
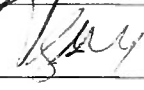
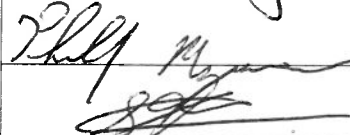
Name	Address
Broghda Kelly	33 Davenport, Castle Ave, Clontarf
Simon Hoops	33 Davenport, Castle Ave, Clontarf
John Mason	Sutton Pt D13
JAMES MORTON	EVERA PARK, HOWTH
Lynne Drangode	Stepolin Lane, Dalkey
John Drangode	Stepolin Lane, Dalkey
John McChes	31 Brairfeild Road
Fiona Spain	188 Brairfeild Circle
Tracy Jordan	85 Ballynarect Howth
Susan Doheerty	71 Seagrave Rd, Dalkey
Ciaran Bradshaw	22 Foxhill Park D13
Leona Bradshaw	" "
Aoife Bradshaw	" "
Tony Bradshaw	" "
Stephan O'Connor	Dublin 7 (Ballystan)
Michael U	Dublin 13
Anna	D13
AMANDA FITZPATRICK	Grangeabsey Ave D13
Evelle Barnes	Portland Row D7
Ana Martin	313 Collins Av. D09

# Save direct DART services to Howth, Sutton and Bayside

Irish Rail has lodged their planning application to An Bord Pleanála for DART+ Coastal North.

It proposes replacing direct DART services to Bayside, Sutton and Howth with a shuttle DART from Howth Station to Howth Junction and Donaghmede station.

We are calling on Irish Rail, The National Transport Authority, and the Minister for Transport to keep our direct DART services.

Name	Address	E. Mail
	25 Munster St D07 Z	
LARA FLORESCU 	4 Saviginfin Road, Howth.	
Egbert Vickers	74 Lambreecher, Balgucigan, Co Dublin	
LAURETTA O'CONNOR	6 STATION ROAD cottages, Sutton, Dublin 13	
Aonnie O'Hanlon	9 Warrinhouse Road Ballyke 13	
Dave Farwood	21 Dept House, Howth	
DEON LOUW	4 TARA, BALKILL RD, D13XR86	
Marc Backhaus	4 Tara, Balkill Rd, D13XR86	
LARA BACKHAUS	4 Tara, Balkill Rd, D13XR86	
Alison Maguire	8 Clonada Near Dunleaphane	
	8 Clonada Near Dunleaphane 5 Brooklawn Dunsgriffin Rd, Howth	
y strong	12. st. nessens close Howth.	
Seán Dorle	8 Canal Road APORE pub 5	
JACK HERBERT	14 Tramway Ct Sutton	
Patricia O'Sien	38 Howsons View Howth.	
Kendall Dolbec	39a St Dominians Mill Sutton	
Eudya Sugar	64 Grace O'Malley Rd Howth	
Elia Ha Nasser	Dublin 8 Newmarket Courts	
Suzanne Cheever	Dublin 8 New Market Yards	

# Save direct DART services to Howth, Sutton and Bayside

Irish Rail has lodged their planning application to An Bord Pleanála for DART+ Coastal North.

It proposes replacing direct DART services to Bayside, Sutton and Howth with a shuttle DART from Howth Station to Howth Junction and Donaghmede station.

We are calling on Irish Rail, The National Transport Authority, and the Minister for Transport to keep our direct DART services.

Name	Address
David Fagan	22 Parkhill St.
Caoimhe Burke	101 Ardcollum Ave
DAN JAMES	PINEHURST, BALLINACRE, HOWTH
Peter Lake	24 Usher's Lane
Conor Beltan	23 Seagrango Drive
Eugene Kelly	Donaghmede.
Karl Swan	24 WAREHOUSE RD BARBOYLE.
Katty Banks	Burnley Bailey Green Road
FRANK JAMES	Burnley, Bailey Green Road Howth
Jeanne Moore	61 Ralpass Rd Howth
Gáran Moore	75 St Peters Tce. Howth
Audrey CLARKE	8, Duncarraig Sutton D.13.
Geraldine Clarke	8, Duncarraig Sutton D13.
KATIE DWYER.	Sutton Bush, Carrickbrack. D13.
Jill Duncen.	28 St Nessus Rd
Jim Duncan	28 St Nessus Terrace
Ueaps	21 The Grove Ine Bay
Denise Winters	4 Canion Court St D.15
Clare Maxwell	8 Binn Eadair View Sutton D13
Lauryn Ivory	12 Clonard Rise Ballyogan, Dublin



# Save direct DART services to Howth, Sutton and Bayside

Irish Rail has lodged their planning application to An Bord Pleanála for DART+ Coastal North.

It proposes replacing direct DART services to Bayside, Sutton and Howth with a shuttle DART from Howth Station to Howth Junction and Donaghmede station.

We are calling on Irish Rail, The National Transport Authority, and the Minister for Transport to keep our direct DART services.

Name	Address
Hazel Carr	1 La Vista Avenue, Sutton, D13
Caitriona Moran	32 Alexander Court, Fenian Street
Hasan Genc	32 Alexander "Fenian"
MARTA MORENO	12 TURNBERRY, BALDOYLE
Michelle O'Connell	1 Dargans Way, Dublin 13
Maah Carey	1 DARGAN'S WAY, DUBLIN 13
Nail Hq	68 U. A. GROVE
Sinead Leonard	14 Templeview Ave, Clonsilla D13.
Séan Traynor	14 Templeview Ave, Clonsilla, D13
Cerun de Jonyk	1, Thommarby Grove. D13
Samantha O'Hanrahan	42 MORROW HOUSE, Baldoyle.
Kathy Walsh	23 Glebe St Talleght
P. Keough	10 Broncoosa Green Talleght
ELWIRA PROJEKTA	GREENHEAD, CEANNOG ROAD, B142;
Aoife Deery	50 Grace O Malley
CRAIG DEERY	————— " —————
Ailyn Loneragan	Ballygreen Rd.
JOEY LONERAGAN	" " "
Jenny Deery	50 Grace O Malley
Roy Moore	64 Ballygreen Rd' Howth

# Save direct DART services to Howth, Sutton and Bayside

Irish Rail has lodged their planning application to An Bord Pleanála for DART+ Coastal North.

It proposes replacing direct DART services to Bayside, Sutton and Howth with a shuttle DART from Howth Station to Howth Junction and Donaghmede station.

We are calling on Irish Rail, The National Transport Authority, and the Minister for Transport to keep our direct DART services.

Name	Address
Seán Kennedy	94 Cardonagh L Rd. D15 X2K
Patrick Kennedy	94 Cardonagh Rd D15 X2K
Robyn Kennedy	94 Cardonagh Rd D15 X2K 7
Hazel Kennedy	94 Cardonagh L Rd D15 X2K 7
Lizzy Kennedy	94 Cardonagh Rd D15 X2K 7
Leon Darby	9 Parkside View, D13
Sarah Clifford	190 Marigold park, D17
Shanna Corrad	74 Thormanby Rd, Howth D13
Addison Corrad	74 Thormanby Rd, Howth D13
Patricia Hayden	Sezimbra, Thormanby Rd, Howth
IOANA ANDREA UNCHEASU	4 BARNWELL DRIVE, ONGAR, DUBLIN 15
Seán Corrad	55 church street howth
Joe Moran	55 howth street howth
Laura Karamish	abbey street
Mikolaj Rogalski	210 Newtownish, D
Yara Karamish	Abbey St
Susan Harte	2 Brook cottage Greys lane Howth
Pat Harte	2 Brook cottage greys lane Howth
RACHEL EGAN	34 Ferguson Road, Drumcondra
Conall Mulvaney	Puslin, Carrubrod Rd, Howth

# Save direct DART services to Howth, Sutton and Bayside

Irish Rail has lodged their planning application to An Bord Pleanála for DART+ Coastal North.

It proposes replacing direct DART services to Bayside, Sutton and Howth with a shuttle DART from Howth Station to Howth Junction and Donaghmede station.

We are calling on Irish Rail, The National Transport Authority, and the Minister for Transport to keep our direct DART services.

Name	Address
Sandra Kelly	Grange Abbey Baldoyle
Teresa O'Malley	Howth Rd, Raheny
Marie Hunter	Thornaby Rd, Howth
Una Care	29 Thornaby LWS
Louise Jennings	louisejennings66@bt.com
Mark Conn	6 Cannon Rock View, Howth
Runde Pass	Balrath Rd Howth
John Peell	Bayes Pass, Balrath to Howth
Helen O'Shea	31 Woodliff Heights, Howth
Evelyn O'Shea	31 Woodliff Heights Howth
Adrian Kelly	Brown Road, Howth
Sandra Jones	Burrows Heat Sutton
Aline Scott	56 South Avenue
Linda Regina Cawley	136 Newbrook Ave
Grace Cawley	136 newbrook ave
Bonny Harding	
Laura Bennett	39 Grace O'Malley Dr.
BEN McLOUGHLIN	16 SEAGRANGE AVENUE
James Bennett	39 E O Malley Dr.
ALINA ROTARU	35 SUTTON DOWNS. BAYSIDE

# Save direct DART services to Howth, Sutton and Bayside

Irish Rail has lodged their planning application to An Bord Pleanála for DART+ Coastal North.

It proposes replacing direct DART services to Bayside, Sutton and Howth with a shuttle DART from Howth Station to Howth Junction and Donaghmede station.

We are calling on Irish Rail, The National Transport Authority, and the Minister for Transport to keep our direct DART services.

Name	Address
Cormac Feely	78 Balkill Park Howth
Elia Butlerly	14 drinnigh wood Portmarnock
Alannah Kinane	45 St petters Terrace Howth
Saorise Kinane	45 St petters Terrace Howth
Siveach Stimpfig	18 Grace O'Malley Rd, Howth
Saray del Valle	91, The waterside Dublin 4
Brian Kinane	45 St petters Terrace Howth
Cian Kinane	45 St peters Terrace Howth
Caragh Kinane	45 St peters Terrace Howth
Kurtusmore	A108 Two Tree North
ELLAINÉ MAGNAN	33 COOKE HALL, DUBLIN 3
Jack Varonin	" " " " "
Deirdre Conington	Island View Balkill Rd Howth
Karen O'Donoghue	64 Balglass Road, Howth, Co. Dublin
Maria Paschko	8, Crosstrees, Howth
Rebecca Keegan	7 Elmfield Court, Clarchall D13
Sam Brennan	7 Elmfield Court Clarchall D13
Charlie Paterson	15 Fiddlers building
Alison Byrne	Howth Grace O'Malley Rd
Paul Elyo	Boterstown, B Dublin

# Save direct DART services to Howth, Sutton and Bayside

Irish Rail has lodged their planning application to An Bord Pleanála for DART+ Coastal North.

It proposes replacing direct DART services to Bayside, Sutton and Howth with a shuttle DART from Howth Station to Howth Junction and Donaghmede station.

We are calling on Irish Rail, The National Transport Authority, and the Minister for Transport to keep our direct DART services.

Name	Address
Suzanne Hardy	2 Saint Laurence Terrace Howth
Lynne Henderson	3 Graysbrook, Main St, Howth
Mark James	3, Graysbrook, Main Street, Howth
AnnMarie O'Connor	14 THURMANBY HILL HOWTH
Suzanne S. G. O'Connell	Portlaoigh, Greystown, Howth
Beatrice Trehan	5 THE AVENUE STATION MANSION, PORTLAOIGH
Jaime Saez Quintanilla	5 the avenue, station mans, Portlaoigh
Barbara Connaughton	Island View, Balkill Road, Howth
Solyn Connaughton	Island view Balkill Rd Howth
Helen Galsay	8 Seavoye Road, Ballyke, D.13.
Rob Langford	38 OFFINGTON LANE SUTTON DUBLIN 13
Anne Langford	38 OFFINGTON LANE SUTTON DUBLIN 13
Steph Flannery	5 CRUICKSHANKS, HOWTH
Kathryn Horgan	Howth D13 X602
Sharon Flynn	Baldrye D13 <del>C9X7</del> C9X7
John Flynn	Baldrye D13 C9X7
Fintian Flynn	" " "
Fergal Flynn	" " "
William Lynch	14 Seaview Terrace, D13 KP66, Howth
Paul Ward	FOR Hill Howth

# Save direct DART services to Howth, Sutton and Bayside

Irish Rail has lodged their planning application to An Bord Pleanála for DART+ Coastal North.

It proposes replacing direct DART services to Bayside, Sutton and Howth with a shuttle DART from Howth Station to Howth Junction and Donaghmede station.

We are calling on Irish Rail, The National Transport Authority, and the Minister for Transport to keep our direct DART services.

Name	Address
Anna McErl	Balglass Rd Howth
Freya Stewart	Knaughton Lodge, Ashbourne, A84 RY73, Co. Meath
Kevin McCourt	Barnell Place, BALGILFIDD D. 17
Celine Nolan	179 Kingsbury, Raymesth, Co. Kildare
Virginia Lee	32 Malone Gardens, Dublin, D04 T125
Rob Duffell	79 BALKILL PARKS,
CIARA DOHERTY	Thornbury Rd, Howth
JASON DOHERTY	Thornbury Rd Howth
IAN WALLER	6 HOWTH LODGE, HOWTH
F. O'Meara	finn@meera@yahoo.co.uk
Fiona Kelly	howth@igmail.com
Luis Olu	Redwood Lodge Sutton
Eoin Olu	Main St
Cara Barker	Main St
Fiona Kelly	73 G.O.N.D Howth
Urb Byness	
Fiona Hartley	10A BINNEADRAIC VIEW, SUTTON
Alan Hartley	
Vouchok Sofia Olu	The Gallery Turvey Avenue
Caitlyn Barton	6 Brian's Heather, Sutton



# Save direct DART services to Howth, Sutton and Bayside

Irish Rail has lodged their planning application to An Bord Pleanála for DART+ Coastal North.

It proposes replacing direct DART services to Bayside, Sutton and Howth with a shuttle DART from Howth Station to Howth Junction and Donaghmede station.

We are calling on Irish Rail, The National Transport Authority, and the Minister for Transport to keep our direct DART services.

Name	Address
Gerardine Dwan	13 ST NISSAN'S CLOSE HOWTH.
ANNIE WINSEER	30 ST JOSEPH'S CRESCENT D15
KENNY WINSEER	"
Rohan Hansen	3 Saint Lawrence Road, Howth
Veronica O'Keane	3 Saint Lawrence Road, Howth
Daniel Maher	47A Howth Road, Sutton
Mary Maher	"
Cian Hansen	3 Saint Lawrence Road, Howth
Judith O'Sullivan	Bayside Sq, Nth
Marian Dorley	41 abbottstown Rd junglas W
Andy Cook	41 ABBOTTSTOWN RD FURTH WEST
Nicola Maynard	16 Olivera Court Dalkey Co Dublin
Brian Deegan	127 Temple Court Northwood
Patricia Murray	9 DALYCK RD HOWTH.
Stephanie Dwyer	5 Parliament St
Hannah Alexander Scipione	61 HARPS CROSS COURT
Sinead McHugh	Howth
Glen Bennett	Howth
H. M. M. M. M.	St MARGARET



# Save direct DART services to Howth, Sutton and Bayside

Irish Rail has lodged their planning application to An Bord Pleanála for DART+ Coastal North.

It proposes replacing direct DART services to Bayside, Sutton and Howth with a shuttle DART from Howth Station to Howth Junction and Donaghmede station.

We are calling on Irish Rail, The National Transport Authority, and the Minister for Transport to keep our direct DART services.

Name	Address
Francis HORISS	Thormanby Woods, Howth
Lia Rose	175th Assams Park D05E763
Gary Moran	175th Assams Park D05E763
Ashy Smith	Coolcar, Killeck Rd, Howth
Karl Smith	Coolcar Killeck Rd Howth
Name	8 Bha Eadair View Sutton
Amy Matsuo	11 Asgard Ave. Balscadden Rd. Howth
Johnny Lacey	11 Asgard Balscadden RD. Howth
Nadine Hobbs	Thormanby Woods, Howth
Lucy O'Shea	Thormanby woods, howth.
Rosaleen Hobbs	" " "
Claire McKeel	20 Grove O Malley Road Howth
Bernie Tonnal	Beilkill Park Howth
Ede Sanders	Beilkill Hill Park
Roma Guehly	Fingal
Pat Long	Bayside
Bridget	Howth
Claire Finn	HOWTH

# Save direct DART services to Howth, Sutton and Bayside

Irish Rail has lodged their planning application to An Bord Pleanála for DART+ Coastal North.

It proposes replacing direct DART services to Bayside, Sutton and Howth with a shuttle DART from Howth Station to Howth Junction and Donaghmede station.

We are calling on Irish Rail, The National Transport Authority, and the Minister for Transport to keep our direct DART services.

Name	Address
Cosden Jaye	11 Howth Lodge D13 XY31
Anne Jaye	11 Howth Lodge D13 XY13
Suzanne Bannan	20 THE BRAMBLINGS, KILLESTER D. 5
Barry Murphy	16 North Road, Sutton, D13
BARRY WHITE	<del>55</del> ABBEY PARK, BALDYLE.
NICOLA SALVIANI	14 RED ARCADES Causeway, D13
NOEL O'SHEA	D13 KP92
Jesse Nicola	95 Saffield strand D13
Rita Harris	65 Dublin Rd Sutton
Eugene O'Connell	65 DUBLIN Rd. Sutton
Joe O'Connell	8 Sweeny Hall Sutton. D13
Camila Domingos	56 Douth Avenue
AnnMarie Murphy	43 Bayside Walk, Sutton D13
KARL OTOOLE	32 Grange Park Walk, Raheny D5
BRENDAN MURPHY	43 BAYSIDE WALK Sutton D13
VINCENT GREANEY	37 HARBOUR VIEW Howth D13
MARIANA BODE	42 BAYSIDE BLVD. NORTH, D13
DOLORES HODGINS	43 ARDMORE PARK D5.
Niamh Hogan	19 OFFINGTON PARK, D13 Y5R7

SUN: 8-9-2024

# Save direct DART services to Howth, Sutton and Bayside

Irish Rail has lodged their planning application to An Bord Pleanála for DART+ Coastal North.

It proposes replacing direct DART services to Bayside, Sutton and Howth with a shuttle DART from Howth Station to Howth Junction and Donaghmede station.

We are calling on Irish Rail, The National Transport Authority, and the Minister for Transport to keep our direct DART services.

Name	Address
Aisling Thompson	15 Kinevara Court, Clontarf D3
Debra O'Sullivan	94 Cedar Park, D7
Laura Moore	14 Offington Avenue Sutton
Marie Moore	2 The Villa, Kilmurud Park
Hugh Moore	" " " " "
CAUSEY JAMES KOC	12 FOXHILL CLOSE D10
Liam Lambert	106 Willie Nolan Rd, Ballyke
Corinne Gallagher	Evora West Dunbar Hill Howth
Carol Dillon-Kelly	247, Verbena Lane, Sutton D13
Geoff Haste	Waterville, Carrickbrack Rd, Sutton D13
Paula McDonnell	Weston Old Carrickbrack rd Howth
Caroline Fox Jones	Old Carrickbrack rd Howth
David Mayne	Weston Old Carrickbrack rd Howth
William McDonnell	Shelyston Ave Sutton
Enos McDonnell	Shelyston Pine Av Sutton
Sylvain Borel	23 Asgard Park Howth
Morgan Charon	Art 92 Watermill Raheny
Tom Meekun	Art 92 Watermill Raheny
Hiel Dart	199 Drumnagh Manor, Portmarnock
Simon Dart	199 Drumnagh Manor, Portmarnock
James Hogan	hoganjames1903@gmail.com

# Save direct DART services to Howth, Sutton and Bayside

Irish Rail has lodged their planning application to An Bord Pleanála for DART+ Coastal North.

It proposes replacing direct DART services to Bayside, Sutton and Howth with a shuttle DART from Howth Station to Howth Junction and Donaghmede station.

We are calling on Irish Rail, The National Transport Authority, and the Minister for Transport to keep our direct DART services.

Name	Address
Conor KERNAN	84A BALKILL GROVE Howth
GEORGIA MINUTILLI	WATERMINT COURT ROYAL CANAL PARK D15
Brian O'Dell	Sand <del>Donaghmede</del>
Xisa O'Neill	Swords Co. Dublin
Niala O'Spina	Grace O'Kalley Ave, Dublin
Robin O'Leary	30 St Fintona Crescent, Sutton
John James	62 Thomagh, <del>Donaghmede</del> Sutton
Shane Moore	113 Dunacorn D17
Rob Curley	Craigview, Clarendon Rd Howth
Kevin Murphy	116 Woodbine Park Raheny D05 Y018
Ryan Donagan	21 Woodbine Drive, Raheny, D05 R5F0
Siobhán Cusack	39 St. Nessans Terrace, Howth
John Breslin	39 St. Nessans Terrace, Howth.
Sharon O'Connor	Grace O'Malley Dr <del>Howth</del>
Kathleen <sup>MIC</sup> Laughlin	1 Tucketts lane, Howth,
Sustine McLaughlin	1 Tucketts lane, Howth,
A B. Conlon	1 Tucketts lane, Howth,
Liz Ryan	Lizryan326@gmail.com - T3.16.10
Marygoode	Marygoode45@gmail.com
Francis Maskerke	Francis <sup>MASKERKE</sup> Maskerke@gmail.com

DART+ Coastal North

# Save direct DART services to Howth, Sutton and Bayside

Irish Rail has lodged their planning application to An Bord Pleanála for DART+ Coastal North.

It proposes replacing direct DART services to Bayside, Sutton and Howth with a shuttle DART from Howth Station to Howth Junction and Donaghmede station.

We are calling on Irish Rail, The National Transport Authority, and the Minister for Transport to keep our direct DART services.

Name	Address
AMBER DILSON	Howth, Co. Dublin
LAUREN McDONALD	Howth, Co. Dublin
Amber Peters	Baldoye, Co. Dublin
Maks Majeski	Baldoye, Co. Dublin
Donal Hughes	Sutton Dublin
Mary Hughes	Sutton Dublin
Mary Powell	Kilmock West, D.5.
MARC CARRIC	66 ASHCROFT RATHERY
STEPHEN MEADE	17 THE CRESCENT, MALAHIDE
PAUL McLAUGHLIN	1 TACKETTS LANE, HOWTH
Liliya Khisamova	8 Dunes Court, LUSK
Violet Limbe	8 Seapange Ave Baldoye
Kerstin Ruston	29 Mai-Sheet Howth
Steffi Dengler	Hauptstr. 8, 9126 Rannstein Germany
Helen Kelly	77 Glencarrig Sutton
Frank Kelly	77 Glencarrig Sutton
Maah Lawlor	106 Willie Nolan Rd Baldoye
Berene Mooney	Seeto ker. D.13
John Mooney	205 Santa Lucia
Maeva Magner	51 Sutton Grove, Dublin 13

# Save direct DART services to Howth, Sutton and Bayside

Irish Rail has lodged their planning application to An Bord Pleanála for DART+ Coastal North.

It proposes replacing direct DART services to Bayside, Sutton and Howth with a shuttle DART from Howth Station to Howth Junction and Donaghmede station.

We are calling on Irish Rail, The National Transport Authority, and the Minister for Transport to keep our direct DART services.

Name	Address
KEITH NIXON	84 STAPOLIN LANS, BALDOYLE
Mike McNamee	9 Santa Sabina Manor
Anna McNamee	9 Santa Sabina Manor
Mike Pirkwell	42 Bilkill Park Howth Co Dublin
RACHEL DUCQUESNOIS	28 STAPOLIN AVE, BALDOYLE
<sup>QUENTIN</sup> RACHEL DUCQUESNOIS	28 STAPOLIN AVE, BALDOYLE
MAX PLATZ GUMMER	2 Rockfort House, Desy Court, Pils Street, Dublin
Marc K	11 CAMDEN STUPPER, D02C2V1, DUBLIN
Shirley Roche	9 Church Street Howth Dublin
Kilowatt	26 Thomabay Court D13X920
Nicky Maher	55 Tumberry Baldoyle D13
Sharon	9, MARINER'S BOYE HOWTH.
Ruth Sanders	85 ST ASSAULT AVE, RATHMOUNT D05 T227
Shirley Sanders	Byron Lodge, Strand Rd. Sutton
Elizabeth Reilly	eliz.trayner@gmail.com
Rebecca O'Connell	drrebeccaconnolly@gmail.com
Aileen Griffin	draileengriffin@gmail.com
MARGARET MAHER	margaretmaher7@gmail
Liz O'Shea	Teahurstwood Park Ashbourne Co. Wick
Murcam N. Riain	Finglas, Dublin 11

# Save direct DART services to Howth, Sutton and Bayside

Irish Rail has lodged their planning application to An Bord Pleanála for DART+ Coastal North.

It proposes replacing direct DART services to Bayside, Sutton and Howth with a shuttle DART from Howth Station to Howth Junction and Donaghmede station.

We are calling on Irish Rail, The National Transport Authority, and the Minister for Transport to keep our direct DART services.

Name	Address
Deagh Cunningham Andrus Loftus	243 W/T Prospect Ave. D13 Balkill Park, Howth
Myrrose Loftus	Balkill Park, Howth
Brendan Lynch	6 Waverley, Howth Harbour Rd
Michael Matthews	19 Brian Ave, Marino
Emma Kearney	19 Brian Ave, Marino
Jennifer Fitzgerald	49 Offington Lawn, Sutton, D.13
Gavin Fitzgerald	49 Offington Lawn, Sutton, D.13
Bronagh Egan	36 Carrickbrack Hill, Sutton
Stephen Wills	82 Grace O'Malley Rd Howth
Alice Foley	80 Foxfield Grove, Raheny
Aine Coady	80 FOXFIELD GROVE
Caroline	80 Foxfield Grove
Colm Broaders	9 Mayclare Ave, Baldryk. D.13
Molly Gray	Burnell Court, D.17
Rosie Roney	64 Binn Caclair View: D13
Anne Marie Reddy	64 Binn Caclair View D13
Bobby Evans	31 Glenwood RA RATHENY.
Maere MacL.	Thomsonby Rd
Dennis Vicky	Thomsonby Rd

# Save direct DART services to Howth, Sutton and Bayside

Irish Rail has lodged their planning application to An Bord Pleanála for DART+ Coastal North.

It proposes replacing direct DART services to Bayside, Sutton and Howth with a shuttle DART from Howth Station to Howth Junction and Donaghmede station.

We are calling on Irish Rail, The National Transport Authority, and the Minister for Transport to keep our direct DART services.

Name	Address
Amyrose Wickstone	130 Red Arches Rd, Baldacyle
June Kelly	130 Red Arches Rd
Beryl Ryan	2 LORRIG RD Dalkey
Carol Gallagher	37 Mariners Court
SOMER MICHALAK	38 HOLWELL CRESCENT SOUTH
BERRIN MCGILGON	Dunedin Thomond Rd
Tom Moran	Dunedin Thomond Rd
Demi Hayster	Dublin 15
Liam Hayster	Dublin 15
Kevin Massey	18 Grace Mary Drive Howth
Meabli Kelly	3 MARINERS COVE, HOWTH D13
Doragh Stattery	3 MARINERS COVE, HOWTH
WYND SULLS	ODIN, NASHVILLE PARK, HOWTH, CO DUBLIN
WYND SULLS	" " "
DAVE DEW HAN	128 GUTHRIE PARK QS
Germaie Mallin	33 Warrenhouse Rd, Baldado, D13
Ann Ryan	100 KILPATRICK ROAD BLANCKENHARD
Shane Henry	2 Mountglen Ave Newport D15
Mariana Valdivia	Don Loughree
Reemah Ryan	Howth



# Save direct DART services to Howth, Sutton and Bayside

Irish Rail has lodged their planning application to An Bord Pleanála for DART+ Coastal North.

It proposes replacing direct DART services to Bayside, Sutton and Howth with a shuttle DART from Howth Station to Howth Junction and Donaghmede station.

We are calling on Irish Rail, The National Transport Authority, and the Minister for Transport to keep our direct DART services.

Name	Address
Lisa H. Loughlin	97 GRANGE ROAD, BACJOTLE DIS
Kevin TONNE	2, ACREAM PARK, Howth
Ross Dermody	Seawood, Balkill Rd, Howth, Co. Dublin
TOM O'SULLIVAN	20 Main St, Howth, D13
Sofia Espinosa	5 Strand Road, Sandymount
PAUL PATTON	16 SOUTH HILL, SUTTON, D13
Thierry C. B. Silva	Bduoyac, Cloggriffin
Anura Peelo	Offington, Sutton, D13.
Sophia Strumberg	9 the Finelater, Harbour Road, Howth D13
Brunna McMurphy	apt 101 Block D Humintin Guelini D07 C52K
Beds Hoefi	SVEN RINMANS GATA 5, SWEDEN
Nour Sabraagh	274 N Circular Road, D07ED7R
<del>S. R. R. R.</del>	<del>Howth</del>
SABARATHINAM	PARKSIDE PLACE, DUBLIN - 13
Ivette Baldelme Ramos	9 Sheppard St Lower, Dublin 1
MARIA MARTINA GAVIA	1 Millstead, Blanchardstown D15
Jesús Aguilar López	5 Saddles Glade, Mulhuddart D15
Jade Tam	61 Glencarrary, Sutton
Stephen Claffey	61 Glencarrary, Sutton.
Muzana Vighianese	Parkgate Place, D08
Wally Lynch	Claxmont Rd, Howth

# Save direct DART services to Howth, Sutton and Bayside

Irish Rail has lodged their planning application to An Bord Pleanála for DART+ Coastal North.

It proposes replacing direct DART services to Bayside, Sutton and Howth with a shuttle DART from Howth Station to Howth Junction and Donaghmede station.

We are calling on Irish Rail, The National Transport Authority, and the Minister for Transport to keep our direct DART services.

Name	Address
Jingathir Jacob	128 DUBLIN RD - SUTTON
Tom Kelly	TEARWINDS - BALLY GREEN Howth
JACK KELLY	"
Maura Sully	Apt 72 Ballsbridge Park New Howth
Nicole Shannon	7 CASARA VIEW, HOWTH, CO. DUB.
Mark Hann	7 Casara View Howth.
Freddie Callaghan	37 MARINER COURT DUBLIN 5.
Pauline Michalak	38 Hollywell Crescent South Greenis
Lakshmi Jayakumar	85, Belgrove park, Clontarf, Dublin D03
SHANITHA POOJA	Mount Prospect Lane Clontarf Dublin D03
SAKTHI GANESH	31, Mielan de, Road, Raheny DU5P447
Martha Hobitt	Bayside
Rita Haggis	Sutton
Caroline Hobitt	Raheny
Larry Hobitt	Bayside
Pauline Bray	Sutton
Desiree Bray	
Bernarda Manjun	15 Balmayne Longriffin
Caira Capaldi	11 Offington Court
Carl Macgibbon	Maceahedge, Clonsilla (Rd)

# Save direct DART services to Howth, Sutton and Bayside

Irish Rail has lodged their planning application to An Bord Pleanála for DART+ Coastal North.

It proposes replacing direct DART services to Bayside, Sutton and Howth with a shuttle DART from Howth Station to Howth Junction and Donaghmede station.

We are calling on Irish Rail, The National Transport Authority, and the Minister for Transport to keep our direct DART services.

Name	Address
Julia Hayes	Sutton Park, Dublin 13
Kristin McKenna	Woodcliff Heights D13
Michael McKenna	Woodcliff Heights D13
Patricia Gonzalez	Raheny, Dublin 5.
Ilie Cincovec	Bayside.
Joni Byrne	59 Kinnel DA Raheny
Collette Byrne	51 11 16 4
Blánaid McCormick	54 Alder Rd, Sutton
Lisa Kennedy	Tallaght.
Hugh Funnell	Tallaght
Omer Akyal	Finglas
Fatma Mehmet Dogan	Finglas
Sarah Funnell	Potnamod.
Ruth McMahon	Baldyle
Gabriel Langan	S Dublin
Deirdre Hallen	Raheny D5.
Sinead Dragan	Bayside D13
Brian Finn	Bayside D13
Clovia Finn	Bayside D13.
Billy Connel	Bayside D13
ERIQUE BLANCO	ASTURIAS <del>13</del>

# Save direct DART services to Howth, Sutton and Bayside

Irish Rail has lodged their planning application to An Bord Pleanála for DART+ Coastal North.

It proposes replacing direct DART services to Bayside, Sutton and Howth with a shuttle DART from Howth Station to Howth Junction and Donaghmede station.

We are calling on Irish Rail, The National Transport Authority, and the Minister for Transport to keep our direct DART services.

Name	Address
Barbara Massey	6 Saint Mary's Place D13 N26 Howth
Sergei Korshak	23 Leinster Sq Dublin
Angie Mastre	6 saint Mary's place D13 N26 Howth
Robert Bourke	1 Coolbane wood Castlecomer Limerick
Clodagh Ryan	23 Railway Road Clongriffin
Rachael Burke	1 Clonville Drive, D13.
Pat Magee	Baltimore, Sutton Rd. D13
Margaret Lynch	4 CAMPBELL CRT., Howth Co. DUBLIN
Aoife O'Carolan	Fairway Howth.
Gareth McNabre	60 Turnberry, Baldoyle
Ann-Marie McNabre	60 Turnberry, Baldoyle
LAURA DEEGAN	CRUMLIN
SOLIN WARD	BALLYFERRET
LUGHIE O'CONNOR	CLAREMACK
Brian Walsh	Baldoyle
KEVIN	SUTTON
Ruth O'Brien	Dalkay
Gary O'Brien	Dalby
John Battello	43 Glencreeing D13
Maria Dwyer	Clontarf, D03

# Save direct DART services to Howth, Sutton and Bayside

Irish Rail has lodged their planning application to An Bord Pleanála for DART+ Coastal North.

It proposes replacing direct DART services to Bayside, Sutton and Howth with a shuttle DART from Howth Station to Howth Junction and Donaghmede station.

We are calling on Irish Rail, The National Transport Authority, and the Minister for Transport to keep our direct DART services.

Name	Address
Tomás Lihane	122 <del>Clontarf</del> Hill Road, Clontarf, Dublin 3.
Mrs. M. Loughlin	19 St. Lawrence Ter. Howth
Paul Cruise	23 Ferryway Ave
Orshay Coakley	23 Ferryway Ave Coakley
Paul Coakley	23 Ferryway Ave Coakley
Patricia Waite	2 College St Baldagee, D13
Shelagh Pidgeon	7A ENNA PARK PARK, D5.
Violaine LAVAL	KILLESTER D5
Dominic Dominic	43A Rotoath AVE
Maryra Andrade	6 Briston.
Gary Jell	Swords
Marta Sanz Vidal	Apartment 18 Grosvenor House Montebon
Georgia-Mary Stanton	Asgard Park Howth
Yvonne McEvoy	Offington lawn Sutton
Ailbe Noian	Asgard Park, Howth
Barbara Reamsbottom	Thornaby lawn, Howth
Mark Reamsbottom	Thornaby lawn, Howth
Mark Whangre	Carnelbrack Road Howth.
Gueta Cahill	Carnelbrack Road Howth.
Clara Cahill	Carnelbrack Road Howth

# Save direct DART services to Howth, Sutton and Bayside

Irish Rail has lodged their planning application to An Bord Pleanála for DART+ Coastal North.

It proposes replacing direct DART services to Bayside, Sutton and Howth with a shuttle DART from Howth Station to Howth Junction and Donaghmede station.

We are calling on Irish Rail, The National Transport Authority, and the Minister for Transport to keep our direct DART services.

Name	Address
Sheila Mc Bride	Leivish Kildare
Jamie Mc Bride	" "
Mal Costello	Sutton P. 13
Starron Malone	Donaghmede D 13
Rachel Garbutt	Howth
Eva Garbutt	Howth
Laura Garbutt	Howth
Rafael Soares	Bayside
Daria Pires	Howth
Daryl Blades	Howth, Clarendon Road.
Emma Davey	Knockerrin, Clarendon R.D., Howth.
<del>Maura O'Leary</del>	A GUARANTEE DRIVE THE DONAGHES
Liam Galley	77 Grange Abbey Drive, Donaghmede
Rahul Arya	27 Oaks, Bay Side
Conor Reamsbottom	21 Thornaby Lane, Howth
Joshua Gordon	81 Killester
Liz Gordon	Killester
Dimitra Gantandou	304, Block E, Castlebarber Square, D01V3K7
Deirdre Murray	2 Verdana Place D13
Mark Murray	2 Verdana Place, D13KX

# Save direct DART services to Howth, Sutton and Bayside

Irish Rail has lodged their planning application to An Bord Pleanála for DART+ Coastal North.

It proposes replacing direct DART services to Bayside, Sutton and Howth with a shuttle DART from Howth Station to Howth Junction and Donaghmede station.

We are calling on Irish Rail, The National Transport Authority, and the Minister for Transport to keep our direct DART services.

Name	Address
Sinéal Drew	Ballyiffin D.15.
Sonia O'D	Raheny D.5
Una Cleary	Howth
Sandra Clonan	Howth
Niall Todd	Finglas D11
Adrian B...	
Rebecca O'Grath	Coolock D17
Jessica Mc Guire	Clonsilla D17
Ben Daly McKenna	Phenix Park Blackrock
Gerard Dunne	Sutton D13
Himani Sharma.	Sutton D14
ADRIANA KUSELICOVA	Adriana Kucelova
RADUVAN MANUKA	MIRLE HOUSE, BALDYLEE D15
Shirine LaFi	Baldylee
Sarah Gordon	Killeshel
Nateli Gaitemidou	309 Castleford Square, D01 V3 K7.
Martin Cleary	Bayside D13
Clodagh Cremon	Howth D.13.
Don O'Ballaghan	
Sinead Burke	Caulston, Dub. Co. Meath

# Save direct DART services to Howth, Sutton and Bayside

Irish Rail has lodged their planning application to An Bord Pleanála for DART+ Coastal North.

It proposes replacing direct DART services to Bayside, Sutton and Howth with a shuttle DART from Howth Station to Howth Junction and Donaghmede station.

We are calling on Irish Rail, The National Transport Authority, and the Minister for Transport to keep our direct DART services.

Name	Address
Patricia Manning	D3
<del>Evelyn Keegan</del>	D3
Brandon McCormick	ALDEN ROAD D13.
Shannon McBride	Kanacagh, D6
Uiníon Ó Súilleabháin	Sutton, D13.
Markus Pano	39 Howth Road, D13 X7K2
Colin Cashan	39 Howth Road, D13 X7K2
Róadhá Brady	32 Verdun Ave, D13 T207
Caroline McCombs	TRIM Co. Meath
Brian Malone	Donaghmede D.13
Bernie Cleary	Sutton D13
JUAN VANESSA LACABA	CITY SQUARE APARTMENT, DUBLIN
Telsha Kershaw	44 Moore Road Ballyfermot
Pat Kershaw	60 Croftwood Park Ballyfermot
Y. J. O'Brien	9 Warranah Rd
Marianne Smith	136 Grange Road Ballyfermot
Marcus Lynch	46 Grace O'Malley Drive Howth
DEEPA BIRRE	Belmont, Nashville Road, Howth
Subhakar Daly	10 Riverside Gate, D17
Leanne Ryan	Rosglon Road, Raheny D5



# Save direct DART services to Howth, Sutton and Bayside

Irish Rail has lodged their planning application to An Bord Pleanála for DART+ Coastal North.

It proposes replacing direct DART services to Bayside, Sutton and Howth with a shuttle DART from Howth Station to Howth Junction and Donaghmede station.

We are calling on Irish Rail, The National Transport Authority, and the Minister for Transport to keep our direct DART services.

Name	Address
MIRCEA CEBAN	27B CHURCH STREET, HOWTH
SARAH HOVE	6 ASGARD APTS BALSANBURG
Helen Webster	83 OFINGTON AVE Sutton
ANDREW WEBSTER	OFFINGTON AVE SUTTON.
Ali Harding	Windwood Deerpark Howth
Ruth Harding	Windwood Deerpark Howth.
NOEL COOPER	11 GRACE O'MALLEY HOWTH
Gabriel O'Grady	16 Harbour View Howth.
Nuala Campbell	Pontmarek, Co Dublin
M. Murphy	Co Dubli
P. Murphy	Dublin
Ben Smyth	14 Boyd House, Howth, Dally
J Buckley	33 James McCormack D13
T. Lunny	31 Glencarrig Sutton, D.13
Paula	6 Castle Downs, Malahide, Co Dub.
Shirley Farrell	9 Abbey St, Howth.
Daphne	7 Casarett View, Howth.
Gráinne Fitzgibbon	72 Seaymore Rd, Baldoyle, D13.
Shane O'J	6 Harbour View, Howth
Janet Cook	Deansgrange Road

# Save direct DART services to Howth, Sutton and Bayside

Irish Rail has lodged their planning application to An Bord Pleanála for DART+ Coastal North.

It proposes replacing direct DART services to Bayside, Sutton and Howth with a shuttle DART from Howth Station to Howth Junction and Donaghmede station.

We are calling on Irish Rail, The National Transport Authority, and the Minister for Transport to keep our direct DART services.

Name	Address
<del>John</del> <del>Am U</del>	<del>Howth Howth Howth</del>
Elizabeth, John Corey	33 St. Fintan's Crescent Sutton
Jacobs McCallahan	<del>33</del> Avalon <sup>arts</sup> Burrer-rd-
Arling Conell	17h Foxfield Park
Don Amy	Barrill PH Howth
Linné Stösser	304 He Crestent place a sands
ROBERT SMITZ	107 SMITHFIELD MXP DUBLIN 7
Billie Cross	Apt 8. Thermanby Court, Thermanby Rd.
Margaret Muecke	73 Belgloss Rd Howth
CHRISTIAN GUARINOS	41 Turnberry Square Baldoyle
<del>James Rafferty</del>	<del>Baldoyle ITALY</del>
Francesca Curran	Ashcroft, Ashcroft, 105
<del>Michael</del>	Via Roma 4, Campagna, Italy
<del>Michael</del>	Via S. Anna 13
Paul M.H.	Via Mario Nantat 42/a Monticelli d'Alba 12076
Arling Healey	Howth
Brian Healey	17 Kerra Park Howth.
Gabriel Xarun	21 Fincher Gate. Partnachree
Hepler Ryan	5 Island View Howth.
Helen Davis	5 Island View Howth.
Elizabeth Mc Guire	Charlie Mc Guire

# Save direct DART services to Howth, Sutton and Bayside

Irish Rail has lodged their planning application to An Bord Pleanála for DART+ Coastal North.

It proposes replacing direct DART services to Bayside, Sutton and Howth with a shuttle DART from Howth Station to Howth Junction and Donaghmede station.

We are calling on Irish Rail, The National Transport Authority, and the Minister for Transport to keep our direct DART services.

Name	Address
Naoise ní Chodlárain	Burrow Road
Kaitlyn Moran	Leinster Rd
Martaí MAGEE	Howth.
Baronette Lynch	Howth.
Deirdre Magee	Howth.
CAMERON DUFFY	CABRA, ASHTOWN
Mary Eganagh	Howth
Olivia Magee	Maynooth
Oz Ali	Tardley, Birmingham UK
JAMES DIGATI	112 ULLSWATER AVE, CLONTARF
Nolin Fitzpatrick	245 Sutta PK, Sutta. D B.
EMMET FITZPATRICK	SUTTON PARK SUTTON
DAVID MAHON	69 BALCANES ROAD.
Charlene De Kloss	117 Churchwell Gardens
Diana Bernadine Jennings	Shanroy 20 Asgara PK Hook
HUGH GREEN	9 LAUREL CANSASSIC ST DB
Dolores MURRAY	Oldtown, Co Dublin
Ron M. Farrell	Mullingar.
Lee Bradley	Finglas
Yasmine Ward	Finglas

# Save direct DART services to Howth, Sutton and Bayside

Irish Rail has lodged their planning application to An Bord Pleanála for DART+ Coastal North.

It proposes replacing direct DART services to Bayside, Sutton and Howth with a shuttle DART from Howth Station to Howth Junction and Donaghmede station.

We are calling on Irish Rail, The National Transport Authority, and the Minister for Transport to keep our direct DART services.

Name	Address
Robert Collins	4 ST FINIAN'S PARK, SUTTON
Hannah Proudfoot	4 St Finian's Park, Sutton
Eimear Cremen	Upper Cliff Rd, Howth
Alma Cremen	Upper Cliff Road Howth
Seán Cremen	Upper Cliff Road, Howth.
SANTAY PRINNAMANE NI	CITYWEST AVENUE, CITYWEST
PAUL BROPHY	27 RSEAND IK HOWTH.
IUNA CEBAN	6 MARINE VILLAS HOWTH
ANTONIETTA KNETIC	112 GAW STREET SHANKILL
Monica Lambert	7 Dunbo Hill, Howth.
Elaine O'Kelly	3 Forge Court Main Street, Howth
Joseph Inyan	17 Foxhill Park, D13.
Willie Aherne	112 Howth Road Howth
James Aherne	112 HOWTH ROAD Howth
Desiree Duffly	143 Rushmore Court
Claire O'Connor	9 Fairview Close Dublin 3
Chicko Mullan	Ceva, Thuramby Rd, Howth
Josephine - Deegan	St. LAWRENCE'S Quay, Howth
John Connor	12 Broomfield Road, Sutton, D13
Mayra Dunne	7 Verdence Park Sutton, D13

# Save direct DART services to Howth, Sutton and Bayside

Irish Rail has lodged their planning application to An Bord Pleanála for DART+ Coastal North.

It proposes replacing direct DART services to Bayside, Sutton and Howth with a shuttle DART from Howth Station to Howth Junction and Donaghmede station.

We are calling on Irish Rail, The National Transport Authority, and the Minister for Transport to keep our direct DART services.

Name	Address
Conor Reel	Shanahan SA Howth RD
SD Ill	Raheny.
Tara Rutledge	Balgriffin
ANDREA HEARNE	STANFORDS CRESCENT, SUTTON, D.13
Gill Gilde	Offington Sutton D.13
CONOR HARTFORD	5 PETERS TERRACE, HOWTH
ADAM O TOOLE	APT 8 THORNBURY ROAD, Thornbury Co. C
JUDY MORGAN	Lea-Road
Maia Valino	41 JARVIS SQUARE BELDOYLE D13.
Mark Cassidy	106 Willow Park Rd, D.11
Yvonne Cassidy	106 - Willow Park Rd D11
Daniel Cassidy	106 - Willow Park Rd D11
Nichola Dunne.	Killester D.5.
Eloise Alois	Summerhill Dublin
Juliana Pelligram	Newbridge, Kildine
João Felipe Santos	<del>112</del> Glassburton - D9
Marcos Dizon	112 Venn Ave, Con. Howth, D5
Conor Fitzpatrick	Sutton Park, Sutton
Loife Fitzpatrick	Sutton Park, Sutton
Robert Cartwright	24 Caspugh Lane Donaghmede

# Save direct DART services to Howth, Sutton and Bayside

Irish Rail has lodged their planning application to An Bord Pleanála for DART+ Coastal North.

It proposes replacing direct DART services to Bayside, Sutton and Howth with a shuttle DART from Howth Station to Howth Junction and Donaghmede station.

We are calling on Irish Rail, The National Transport Authority, and the Minister for Transport to keep our direct DART services.

Name	Address
Annette Brumby	92C Lambhill, T-DB
Liam O'Neill	Tullaght, D24
Josephine O'Brien	75 Lupfield Green
Miriam Dehuff	147 Lupfield Green
Darla Bradley	Finlagan
Aishah Ali Yassin	7 D08 YN63
Maryam Ali Yassin	7 D08 YN63
Husna Yassin	D08 YN63
Lara Reid	D13 YW71
NIAMH HEALY	D14 H795
Stephen Trimble	D14 H795
Ashburna Tracey	D13 H200
Rose Michael	K36 DN23
MATEU WOLKOWSKI	D02A30
Alvaro Rayo Alarcon	D13 P891
ALAN BREWSTER	D13 TT68
M Conaghan	D13 C80
A. Rice	D16 EFG7
Darrell Rice White	D16 EFG8
Jenna Gamble	D13 A7Y2

# Save direct DART services to Howth, Sutton and Bayside

Irish Rail has lodged their planning application to An Bord Pleanála for DART+ Coastal North.

It proposes replacing direct DART services to Bayside, Sutton and Howth with a shuttle DART from Howth Station to Howth Junction and Donaghmede station.

We are calling on Irish Rail, The National Transport Authority, and the Minister for Transport to keep our direct DART services.

Name	Address
Shana Sugrue	24 Thormarby Rd, Howth
Emile Quebecy	25 Serpell Ave
Dylan Byrne	10 St Bernards place
Jade Mullen	D13 VIF2
Amanda Lopes Tavares	5 East Pier Howth
Nadie O'Keefe	92 Kildonan Road
Sam Duffy	36 Castle Orange Ave
FILIPPO DESPI	25 GRAND CANAL
ALIDA IERIDA	82 FELMAYNE SOUTH PARK RD
Eimear Harrington	48 Red Arches Road, Sutton
David Douley	130 Foxfield Grove, Raheny
Henry Payne	28 Snowy Gables, D7
Adrian Burke	19 Kenilworth Ave, D12
Ken Glick Healy	23 Magnolia Rd, D6
THOMAS MOTTON	The Island Chapel
Alexander Trounevich	D12 CG N3

# Save direct DART services to Howth, Sutton and Bayside

Irish Rail has lodged their planning application to An Bord Pleanála for DART+ Coastal North.

It proposes replacing direct DART services to Bayside, Sutton and Howth with a shuttle DART from Howth Station to Howth Junction and Donaghmede station.

We are calling on Irish Rail, The National Transport Authority, and the Minister for Transport to keep our direct DART services.

Name	Address
Aisly Costabella	2A Condoragh lawn Donaghmede.
Dennis Freaney	Blue Water, Seaview Terrace, Howth.
P Byrne	The Hagard House.
Rachel Dunne	Saint Lawrence Quay, Harbour Rd. <sup>Howth</sup>
Conor Delaney	St Lawrence Quay, Harbour Rd.
Nicky Maguire	31 Sepled Creek, Booterstown Co. Dublin
D. Gallagher	Sutton, Dublin 13
Inna Sobel	Bray
Olga Sokolina	Bray
Susan Trengar	Ardenne Green, Dublin 13
Mauri Tumble	The Manby Lanes, Howth
Be Flota	The Manby Lanes, Howth
Md Khairullah Gaurat	City Square, D02NP60
Declan Curtis	44 O'Moore Rd Ballyfermot
Caroline Murray	Rohenny Dublin 5
Olga Conolly	46 Grace O'Malley Dr. Howth
Elizabeth O'Connell	Barrachoola Rd. Howth
Marie Clarke	" " "
Theodore Daly	Springdale Rd. Rathay, D15



# Save direct DART services to Howth, Sutton and Bayside

Irish Rail has lodged their planning application to An Bord Pleanála for DART+ Coastal North.

It proposes replacing direct DART services to Bayside, Sutton and Howth with a shuttle DART from Howth Station to Howth Junction and Donaghmede station.

We are calling on Irish Rail, The National Transport Authority, and the Minister for Transport to keep our direct DART services.

Name	Address
Karamalapati Pradhup	APT 48, 5 level with Apartment, D01Y9Y5
CECIL M XAVIER	17, B3, UConnex, Citymeads D24N4PT
GULW SFOERZ	APT 2. ABOVE SPAE, MAIN ROAD, STANWILL D18F9R9
Tairnín Alessandri m.-A.L. O'Leary	34th Floor Unit. D13DC66. Apts 7
CARINA PASSOS	3 STATION Hill D13DL66
Jackie Campbell	Malahide, Co. Dublin
John Campbell	Baldyle, Dublin 13
Zara Duff	143 Rusheeny Court, D15
Andrew O'Meara	44 Sutton Park
cardine gilligan	131 primrose grove D1
CALVIN CUCKLEY	28 AUBURN DRIVE, KILMEY, CO. DUBLIN
Alanna Myles	28 Auburn Drive Kilmey Dublin
Hone Myzard	Cora Thormanby Rd D.13
Eileen Figs. 6600	46 Fraze Abbey Cr.
Clair Conner	12 Burrenfield Rd, Sutton, D13
Lee Dunne	7 Verbena Park, Sutton, D13
Robert Dunne	7 Verbena Park, Sutton, D13
SIOBHAN BURKE	THE OLD COLLEGE, ABBEY ST. HOWTH
JOBST GREENE	THE OLD COLLEGE, ABBEY ST. HOWTH

# Save direct DART services to Howth, Sutton and Bayside

Irish Rail has lodged their planning application to An Bord Pleanála for DART+ Coastal North.

It proposes replacing direct DART services to Bayside, Sutton and Howth with a shuttle DART from Howth Station to Howth Junction and Donaghmede station.

We are calling on Irish Rail, The National Transport Authority, and the Minister for Transport to keep our direct DART services.

Name	Address
Emer Kirwan	9 Shelburne Rd Sutton
Brian Kirwan	"
Aisling Kirwan	9 Shelburne Rd Sutton
Conor "	" "
Bobby "	" "

# Save direct DART services to Howth, Sutton and Bayside

Irish Rail has lodged their planning application to An Bord Pleanála for DART+ Coastal North.

It proposes replacing direct DART services to Bayside, Sutton and Howth with a shuttle DART from Howth Station to Howth Junction and Donaghmede station.

We are calling on Irish Rail, The National Transport Authority, and the Minister for Transport to keep our direct DART services.

Name	Address
Christina Jukosa	Donaghmede.
Daniel Croderick	Thornville Road, Kibbarruck
Marcus Clarke	35 Belconn's Park West - Ballyras
Paul Farrelly	42 Elm mount park - Beaumont
MARIE CALNAN	12 Glaclynm Apt, Howth Rd, Clontarf
Amyette Aug	Howth D13
Audrey Anderson	52 Off Inverton Lane D13
ADÈLE SLEATOR	16A BINN KADAIR VIEW, SUTTON, D13
Niamh Greaney	6 Llanerch Harbor Road, Howth
Ben Byrne	4 EDNA TERRACE Howth
MARINO MCELROY	4 EDNA TERRACE Howth
John Clarke	16 Abbey Street, Howth D13
Suparna Harray	82 Grace O'Malley rd Howth, D13
Sally Parsons	A914 N 24 3
Melissa Gray	51 Donagh's rd, Donaghmede
Dennis Gray	51 Donagh's rd, Donaghmede
Ger O'Sha	Araby Anton
Amelida Curney	21 St. Lawrence Terrace Howth C.O.
Anna Sweeney	4 G. O'Malley rd Howth

# Save direct DART services to Howth, Sutton and Bayside

Irish Rail has lodged their planning application to An Bord Pleanála for DART+ Coastal North.

It proposes replacing direct DART services to Bayside, Sutton and Howth with a shuttle DART from Howth Station to Howth Junction and Donaghmede station.

We are calling on Irish Rail, The National Transport Authority, and the Minister for Transport to keep our direct DART services.

Name	Address
Joan MacManus	Rowan, First Pier
D. J.	Howth
Briana Utu	St Helen's, Adamstown
Anca Utu	St Helen's, Adamstown
Karen Keenan	Ballycullen Firhouse
Maria Garado	Binn Eada View, Sutton.
Kieran Byrne	5 Turnberry Rd Howth.
Gwendolyn	a Lamburne Village, Donorf
Beatrice Gault	Main Street, Howth
James Traynor	Main St Howth
Aga Kudzycyd-Tolaj	BINN EADAR VIEW
Julia Feltz	Rathmore Road Lower
Aex Zode	Schurich St. Howth
Robert Francis	39 ST DOOLEGH'S SQUARE
Anore Malyk	39 ST DOOLEGH'S SQUARE
Kathleen Malar	55 Turnberry, Beldryer, D.13
Mary Brennan	Mariners Cove Howth.
Jennifer Smyth	Baldyle Rd, Sutton, D13
Oliver Syth	Baldyle Rd Sutton D13

# Save direct DART services to Howth, Sutton and Bayside

Irish Rail has lodged their planning application to An Bord Pleanála for DART+ Coastal North.

It proposes replacing direct DART services to Bayside, Sutton and Howth with a shuttle DART from Howth Station to Howth Junction and Donaghmede station.

We are calling on Irish Rail, The National Transport Authority, and the Minister for Transport to keep our direct DART services.

Name	Address
KENNEDY Gill	1 Inphibin Apartment
JONATHAN LAMUN	BA-0042 D13
Ellen Webb Parkhill	Baldoye D13
Dzungita Sasnaukanta	Waterside Green, Malahide
Jarah Buggy	Elm Mount Park, Beaumont
Sophie Hawthorne	Elm Mount Park, Beaumont, D9
Clodagh Namington	Elm Mount Park, Beaumont D9
Sinead O'Neill	Elm Mount Park Beaumont
Aoife N. J. H. H. H. H.	87 Dublin Road Sutton
Kathleen Scardon	346 Sutton Park, Sutton
Muelc Jordan	87 John's Wood, Clontarf, D13
Veronica Twell	4 Cedar Rd The Donaghmedes
Isabel Leon	67 Cherry House Dublin 4
Vivian Ramos	52 Cherry house Dublin
Richard Dorman	3 Saint Nelson Court Howth
A. Maher	
Eddie Noone	32, Erica Park, Howth
Christina Noone	" " " "