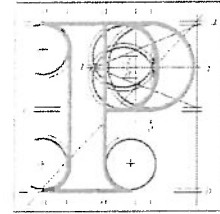


Our Case Number: ABP-320164-24



**An
Bord
Pleanála**

Aoibhinn Tormey
75 Sutton Park
Dublin 13

Date: 31 October 2024

Re: DART + Coastal North Railway Order 2024 - Northern Line between Dublin City Centre and Drogheda including the Howth Branch
Dublin City Centre and Drogheda, located in counties Dublin, Meath and Louth

Dear Sir / Madam,

An Bord Pleanála has received your recent letter and oral hearing request in relation to the above mentioned case. The contents of your letter have been noted.

More detailed information in relation to strategic infrastructure development can be viewed on the Board's website: www.pleanala.ie.

If you have any queries in relation to the matter please contact the undersigned officer of the Board at laps@pleanala.ie

Please quote the above mentioned An Bord Pleanála reference number in any correspondence or telephone contact with the Board.

Yours faithfully,

Aisling Reilly
Executive Officer
Direct Line: 01-8737131

RA03

Teil	Tel	(01) 858 8100
Glaó Áitiúil	LoCall	1800 275 175
Facs	Fax	(01) 872 2684
Láithreán Gréasáin	Website	www.pleanala.ie
Ríomhphost	Email	bord@pleanala.ie

64 Sráid Maoilbhríde	64 Marlborough Street
Baile Átha Cliath 1	Dublin 1
D01 V902	D01 V902

Cllr. Aoibhinn Tormey

75 Sutton Park,

Dublin 13.

22nd of October 2024

Re: DART+ Coastal North Railway Order

Dear An Bord Pleanala,

The broad concept of the DART+ Coastal North plans to expand the DART service to Drogheda are to be welcomed. However, through this application for a Railway Order, Irish Rail are seeking the option of running a shuttle service between Howth, Sutton, Bayside, and Howth Junction stations. The result of this is that the direct DART service to Howth will be lost, impacting thousands of residents, visitors, tourists, and businesses in a negative manner. The proposal will result in significant traffic congestion in the area with the level crossings being down for a prolonged period of time every hour unnecessarily. It will also present significant unnecessary challenges for people with disabilities and our aging population who wish to use public transport.

Irish Rail have not presented any compelling case for the proposed shuttle service and when I have repeatedly asked them for the data to support this in my capacity as a public representative, they have not provided it. While this is concerning in any event, it was further exacerbated when the glaring deficiencies in Irish Rail's capacity to model timetables were evident in the August 2024 timetable changes which caused significant disruption to commuters in Dublin and ultimately had to be reversed. Irish Rail have also recently announced intentions to expand the number of rail tracks from two to four on the Northern Route out of Dublin, thus making such a shuttle service unnecessary.

It is absolutely essential that An Bord Pleanala approve this Railway Order with a condition that the shuttle service to Howth, Sutton, and Bayside is not utilised by Irish Rail.

I ask that you have an Oral Hearing on this matter.

Yours Sincerely,

Cllr. Aoibhinn Tormey.